

**DOCUMENT 00 90 00
ADDENDUM**

ADDENDUM NO. [2] Date: August 21, 2020

**RE: LA CROSSE HOUSING AUTHORITY
 2020 CAPITAL IMPROVEMENT PROJECTS - BID PKG 1
 1307 BADGER STREET
 LA CROSSE, WISCONSIN 54601
 HSR PROJECT NO. 20040**

**FROM: HSR Associates, Inc
 100 Milwaukee Street
 La Crosse, WI 54603
 (608) 784-1830**

To: Prospective Bidders

This addendum forms a part of the Contract Documents and modifies the original Bidding Documents dated August 2020. Acknowledge receipt of this Addendum in the space provided on the bid form. Failure to do so may subject the Bidder to disqualification.

This Addendum consists of [1] page, [1] specification section and [9] 30 x 42 drawings.

CHANGES TO SPECIFICATIONS

1. Section 09 91 13 EXTERIOR PAINTING
 - a. Section attached hereto as part of Contract Documents.

CHANGES TO DRAWINGS

2. Sheets E100 thru E700 30 x 42 drawings attached hereto
 - a. Removal and Remodel General Notes Revised.
 - b. Keynotes revised.
 - c. Light fixture designations revised.
 - d. New detail 2E401.

3. Sheet E800 LIGHTING SCHEDULES AND DETAILS 30 x 42 attached hereto
 - a. Light fixture schedule revised.
 - b. New pole base detail 5E800.

END OF DOCUMENT 00 90 00

Page Intentionally Left Blank

SECTION 09 91 13
EXTERIOR PAINTING

PART 1 GENERAL

1.01 SECTION INCLUDES

- A. Surface preparation.
- B. Field application of paints.
- C. Scope: Finish exterior surfaces exposed to view, unless fully factory-finished and unless otherwise indicated, including the following:
 - 1. Existing light poles.

1.02 RELATED REQUIREMENTS

- A. Division 26: Coordinate timing and sequence for painting light poles.

1.03 REFERENCE STANDARDS

- A. SSPC-SP 1 - Solvent Cleaning; 2015.
- B. SSPC-SP 2 - Hand Tool Cleaning; 1982 (Ed. 2004).
- C. SSPC-SP 3 - Power Tool Cleaning; 1982 (Ed. 2004).

1.04 SUBMITTALS

- A. See Section 01 30 00 - Administrative Requirements, for submittal procedures.
- B. Product Data: Provide complete list of products to be used, with the following information for each:
 - 1. Manufacturer's name, product name and/or catalog number, and general product category (e.g. "alkyd enamel").
 - 2. Cross-reference to specified paint system(s) product is to be used in; include description of each system.
 - 3. Manufacturer's installation instructions.
 - 4. If proposal of substitutions is allowed under submittal procedures, explanation of substitutions proposed.
- C. Samples: Submit three paper "draw down" samples, 8-1/2 by 11 inches in size, illustrating range of colors available for each finishing product specified.
 - 1. Where sheen is specified, submit samples in only that sheen.
 - 2. Where sheen is not specified, discuss sheen options with Architect before preparing samples, to eliminate sheens definitely not required.
- D. Manufacturer's Instructions: Indicate special surface preparation procedures.
- E. Maintenance Data: Submit data including product technical data sheets, material safety data sheets (MSDS), care and cleaning instructions, touch-up procedures, repair of painted and finished surfaces, and color samples of each color and finish used.
- F. Maintenance Materials: Furnish the following for Owner's use in maintenance of project.
 - 1. See Section 01 60 00 - Product Requirements, for additional provisions.
 - 2. Extra Paint and Finish Materials: 1 gallon of each color; from the same product run, store where directed.
 - 3. Label each container with color in addition to the manufacturer's label.

1.05 DELIVERY, STORAGE, AND HANDLING

- A. Deliver products to site in sealed and labeled containers; inspect to verify acceptability.
- B. Container Label: Include manufacturer's name, type of paint, brand name, lot number, brand code, coverage, surface preparation, drying time, cleanup requirements, color designation, and instructions for mixing and reducing.
- C. Paint Materials: Store at minimum ambient temperature of 45 degrees F and a maximum of 90 degrees F, in ventilated area, and as required by manufacturer's instructions.

1.06 FIELD CONDITIONS

- A. Do not apply materials when surface and ambient temperatures are outside the temperature ranges required by the paint product manufacturer.
- B. Follow manufacturer's recommended procedures for producing best results, including testing of substrates, moisture in substrates, and humidity and temperature limitations.
- C. Do not apply exterior paint and finishes during rain or snow, or when relative humidity is outside the humidity ranges required by the paint product manufacturer.
- D. Minimum Application Temperatures for Latex Paints: 50 degrees F for exterior; unless required otherwise by manufacturer's instructions.
- E. Provide lighting level of 80 ft candles measured mid-height at substrate surface.

PART 2 PRODUCTS

2.01 MANUFACTURERS

- A. Provide paints and finishes used in any individual system from the same manufacturer; no exceptions.
- B. Paints:
 - 1. Sherwin Williams (SW). www.sherwin-williams.com/#sle.
 - 2. Hallman-Lindsay (HL). www.hallmanlindsay.com
 - 3. Behr Process Corporation: www.behr.com/#sle.
 - 4. Benjamin Moore: www.benjaminmoore.com
 - 5. Diamond Vogel Paints: www.diamondvogel.com/#sle.
 - 6. PPG Paints: www.ppgpaints.com/#sle.
 - 7. Pratt & Lambert Paints: www.prattandlambert.com/#sle.
 - 8. Valspar Corporation: www.valsparpaint.com/#sle.
- C. Primer Sealers: Same manufacturer as top coats.
- D. Substitutions: See Section 01 60 00 - Product Requirements.

2.02 PAINTS AND FINISHES - GENERAL

- A. Paints and Finishes: Ready mixed, unless required to be a field-catalyzed paint.
 - 1. Provide paints and finishes of a soft paste consistency, capable of being readily and uniformly dispersed to a homogeneous coating, with good flow and brushing properties, and capable of drying or curing free of streaks or sags.
 - 2. Provide materials that are compatible with one another and the substrates indicated under conditions of service and application, as demonstrated by manufacturer based on testing and field experience.
 - 3. For opaque finishes, tint each coat including primer coat and intermediate coats, one-half shade lighter than succeeding coat, with final finish coat as base color.
 - 4. Supply each paint material in quantity required to complete entire project's work from a single production run.
 - 5. Do not reduce, thin, or dilute paint or finishes or add materials unless such procedure is specifically described in manufacturer's product instructions.
- B. Sheens: Provide the sheens specified; where sheen is not specified, sheen will be selected later by Architect from the manufacturer's full line.

2.03 PAINT SYSTEMS - EXTERIOR

- A. EPS 1 Ferrous Material Primed & Un-primed: Acrylic Semi-Gloss
 - 1. (SW) Prep surface with SSPC-SP2. One coat ProCryl Universal Primer and two coats Sher-Cryl HPA High Performance Acrylic B66-300 Series.
 - 2. (HL) Prep surface with SSPC-SP2. One coat Metalguard DTM Acrylic Primer/finish 338 and two coats Rustoleum High Performance DTM Acrylic 3800
- B. EPS 5 Rust Converter Metal Treatment: One coat rust converter (unless required otherwise by manufacturer recommendation). Apply EPS 1 after application of this product.
 - 1. Cortec Corporation, CorrVerter Rust Primer.
 - 2. The Skybryte Company, OSPHO
 - 3. (HL) Rustoleum; Rustoleum Rust Reformer.

PART 3 EXECUTION

3.01 EXAMINATION

- A. Do not begin application of paints and finishes until substrates have been properly prepared.
- B. Verify that surfaces are ready to receive work as instructed by the product manufacturer.
- C. Examine surfaces scheduled to be finished prior to commencement of work. Report any condition that may potentially effect proper application.
- D. Test shop-applied primer for compatibility with subsequent cover materials.

3.02 PREPARATION

- A. Clean surfaces thoroughly and correct defects prior to application.
- B. Prepare surfaces using the methods recommended by the manufacturer for achieving the best result for the substrate under the project conditions.
- C. Remove or repair existing paints or finishes that exhibit surface defects.
- D. Remove or mask surface appurtenances, including hardware, light fixture trim, escutcheons, and fittings, prior to preparing surfaces for finishing.
- E. Ferrous Metal:
 - 1. Coordinate surface preparation in accordance with requirements of selected paint/coating supplier recommendations.
 - 2. Solvent clean according to SSPC-SP 1, 2 or 3 as required to meet manufacturer's preparation requirements.
 - 3. At rust areas, loose mill scale, and other foreign substances using using methods recommended in writing by paint manufacturer. Apply rust converter.

3.03 APPLICATION

- A. Apply products in accordance with manufacturer's written instructions.
- B. Do not apply finishes to surfaces that are not dry. Allow applied coats to dry before next coat is applied.
- C. Apply each coat to uniform appearance.
- D. Dark Colors and Deep Clear Colors: Regardless of number of coats specified, apply additional coats until complete hide is achieved.

3.04 CLEANING

- A. Collect waste material that could constitute a fire hazard, place in closed metal containers, and remove daily from site.

3.05 PROTECTION

- A. Protect finishes until completion of project.
- B. Touch-up damaged finishes after Substantial Completion.

END OF SECTION

Page Intentionally Left Blank



Consultant:

Project Title: **LA CROSSE HOUSING AUTHORITY
LHA 2020 CAPITAL IMPROVEMENTS PROJECTS**
Project Location: LA CROSSE, WI 54601
Sheet Title: **STOFFEL COURT**

Project Title:

HSR Project Number: **20040**

Project Date: **AUGUST 2020**

Drawn By: **C. CRANDALL**

Key Plan:

No.	Description	Date
AD-2	ADDENDUM 2	8-21-20

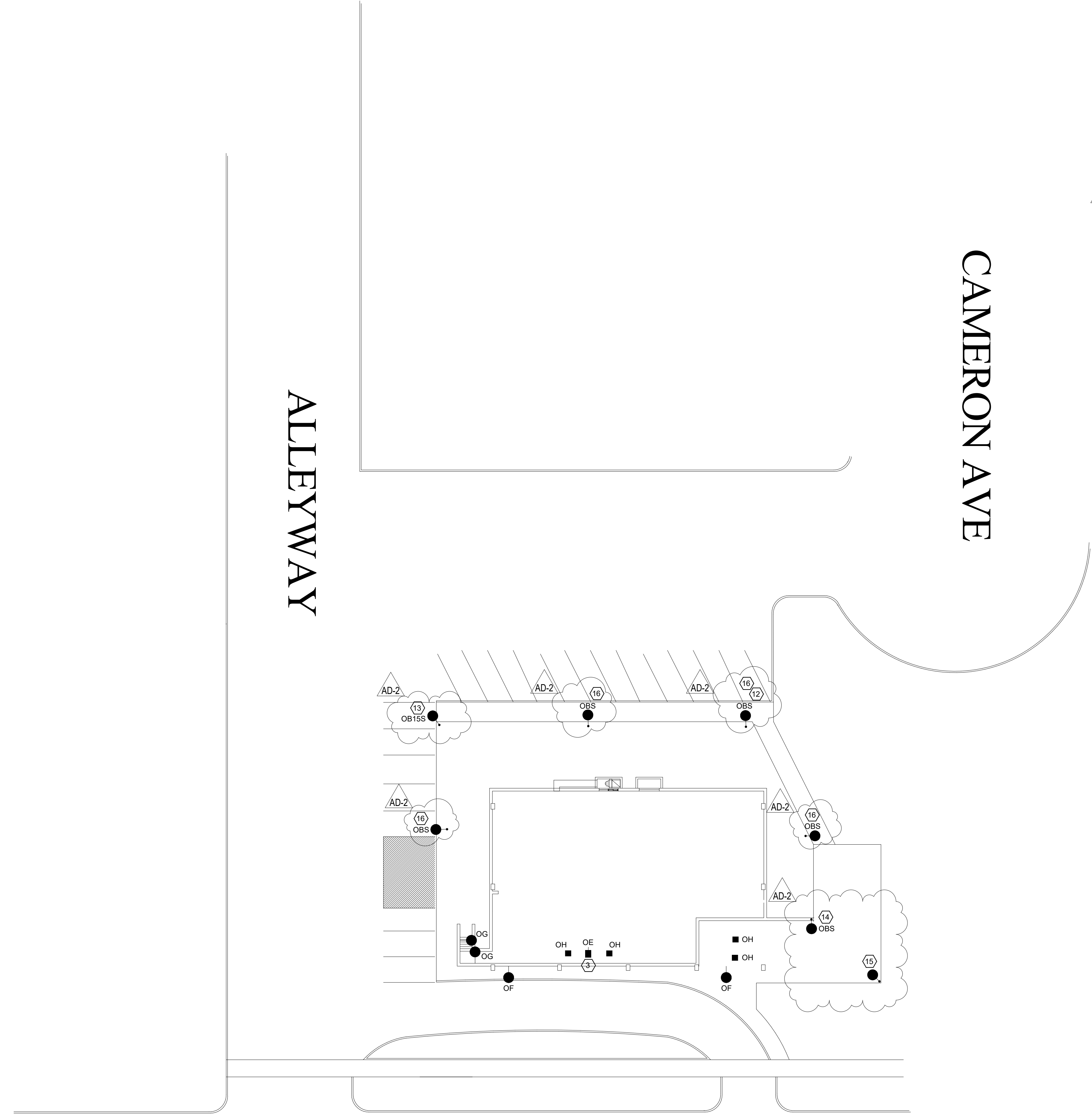
Graphic Scale:
0' 5' 10' 20' 30'

Last Update:
8/21/2020 7:48:14 AM

E100

GENERAL NOTES REMOVAL AND REMODEL	
A	ELECTRICAL CONTRACTOR TO REMOVE ALL LIGHTING EXISTING EXTERIOR LIGHTING FIXTURES AND REPLACE WITH NEW FIXTURE AT SAME EXACT LOCATION. SITE POLES/FIXTURES, WALL PAKS, FLOOD LIGHTS, UNDER CANOPY LIGHTS, AND LIGHTING BOLLARDS.
B	E.C. SHALL REUSE ALL EXISTING CONDUIT AND WIRING, BRANCH CIRCUITS, SWITCH LEG, AND CONTROL FOR ALL REPLACED LIGHTING, UNLESS NOTED OTHERWISE.
C	LIGHTING FIXTURES TO BE REPLACED ONE FOR ONE UNLESS NOTED OTHERWISE.
D	E.C. TO REUSE EXISTING POLE BASES, ASSOCIATED POLES, ANCHOR BOLTS AND EXTEND ALL WIRING AND CONDUIT AS NECESSARY FOR MOUNTING OF NEW FIXTURE UNLESS NOTED OTHERWISE.
E	ELECTRICAL CONTRACTOR SHALL REMOVE AND DISPOSE OF ALL EXISTING LIGHTING FIXTURES IN AREA OF WORK UNLESS NOTED OTHERWISE.
F	ELECTRICAL CONTRACTOR SHALL EXTEND ALL CONDUIT AND WIRING OF ALL RELOCATED ITEMS.
G	THE WORD "PROVIDE" MEANS TO FURNISH AND INSTALL.
H	REPAINT ALL EXISTING TO REMAIN SITE POLES TO MATCH NEW FIXTURE DARK BRONZE FINISH.
I	ALL NEW SITE POLE LIGHTING FIXTURES SHALL BE EQUIPPED WITH INTEGRAL PHOTOCELL, PHOTO ON / PHOTO OFF.

KEY NOTES : (K)	
1.	TYPICAL ONE FOR ONE LIGHT FIXTURE REPLACEMENT FOR ALL RESIDENTIAL UNITS SHOWN THIS SHEET.
2.	PROVIDE NEW LIGHT FIXTURE AND PROVIDE ALL CONDUIT, WIRE, AND TIE TO NEAREST BRANCH CIRCUIT. PHOTO ON / PHOTO OFF THROUGH INTEGRAL PHOTOCELL.
3.	MOUNT NEW FLOOD LIGHT FIXTURE TO EXISTING MOUNTING BASE.
4.	LIGHT FIXTURE MOUNTED ABOVE ENTRANCE DOOR.
5.	E.C. TO REPLACE DAMAGED BASE COVER.
6.	PROVIDE NEW WALL PAK TYPE 'OF' 144" AFF. ENERGIZE THROUGH NEAREST EXTERIOR BRANCH LIGHTING CIRCUIT. PROVIDE ALL CONDUIT, WIRING, PHOTO ON / PHOTO OFF THROUGH INTEGRAL PHOTOCELL.
7.	PROVIDE NEW SITE POLE, BASE, AND FIXTURE. SEE 2E800 FOR POLE BASE DETAIL.
8.	ELECTRICAL CONTRACTOR TO TRENCH FOR NEW UNDERGROUND CONDUIT TO NEW LIGHT POLE. ENERGIZE NEW SITE POLE FROM EXISTING GARAGE PANEL.
9.	E.C. TO COORDINATE WITH LOCAL UTILITY FOR THE REMOVAL OF OVERHEAD POWER LINE FEEDING SITE POLE TO BE REMOVED.
10.	ELECTRICAL CONTRACTOR SHALL BE RESPONSIBLE FOR TRENCHING AND BORE THROUGH BELOW CEMENT SLAB/SIDEWALK. E.C. TO PATCH/REPAIR ONCE COMPLETED.
11.	PROVIDE NEW WALL PAK TYPE 'OF' 144" AFF. PHOTO ON / OFF THROUGH INTEGRAL PHOTOCELL. PROVIDE 20A-1PHASE BRANCH BREAKER FROM EXISTING METER.
12.	REFEED BRANCH CIRCUIT WIRING IF REQUIRED. PROVIDE CONDUIT IF REQUIRED. REPAIR EXISTING CONDUIT AND WIRING.
13.	PROVIDE NEW SITE POLE, BASE AND FIXTURE. REFER TO 2E800 FOR POLE BASE DETAIL.
14.	NEW FIXTURE TO BE PIER MOUNTED ON TOP OF BLOCK WALL. PROVIDE ALL NECESSARY MOUNTING.
15.	REMOVE EXISTING POLE AND FIXTURE. CAP AND FILL FLUSH TO CONCRETE PATIO.
16.	POLE AND BASE TO REMAIN FIXTURE ONLY TO BE REPLACED. STRIP AND REPAINT POLE AND BASE TO MATCH DARK BRONZE FIXTURE FINISH.
17.	BASE TO REMAIN FIXTURE AND POLE ONLY TO BE REPLACED.
18.	BASE TO REMAIN BOLLARD FIXTURE ONLY TO BE REPLACED.
19.	BASE TO BE MODIFIED SEE 2E800 FOR DETAIL. EXTEND CONDUIT AND WIRING. NEW POLE AND FIXTURE.
20.	STUB CONDUIT UP CORNER OF THE BUILDING AND INTO SOFFET FOR RUN TO EXISTING BACK BOX BY SIDE DOOR ENTRANCE. SEE DETAIL 2E401 THIS SHEET.
21.	PROVIDE NEW BACK BOX TO SUPPORT NEW FIXTURE AND CONDUIT FOR NEW SITE POLE.
22.	REINSTALL POWER RECEPTACLE AND CAMERA. PRESERVE CAMERA VIEW.
23.	REINSTALL TWO CAMERAS, PRESERVE CAMERA VIEWS.
24.	RELOCATE NEW BASE AND FIXTURE AS NEEDED TO PRESERVE BRANCH CIRCUIT WIRING.



REFERENCE TAGS	
⬡	KEY NOTE

LIGHTING SYMBOLS	
REFER TO LIGHTING FIXTURES SCHEDULE FOR ALL LUMINAIRE TYPES WHETHER WALL MOUNTED OR CEILING MOUNTED.	
	LIGHTING FIXTURE CIRCUIT SWITCH LEG. NO DESIGNATION INDICATES PORTION OF CIRCUIT SWITCHED FROM LOCAL SWITCH OR OCCUPANCY SENSOR. FIXTURE DESIGNATION (SEE SCHEDULE) SWITCHING DEVICE. NO DESIGNATION INDICATES PORTION OF CIRCUIT SWITCHED FROM LOCAL SWITCH OR OCCUPANCY SENSOR. R. CIRCUIT SWITCHED VIA RELAY IN RELAY CABINET MOUNTED NEXT TO LIGHTING PANEL. CIRCUIT NUMBER.
	LIGHTING FIXTURE - EXTERIOR SCONCE.
	LIGHTING FIXTURE DOWNLIGHT - SURFACE SQUARE TYPE.
	LIGHTING FIXTURE DOWNLIGHT - RECESSED ROUND TYPE.
	POLE MOUNTED AREA LIGHTING FIXTURE(S) - SINGLE LUMINAIRE.
	POLE MOUNTED AREA LIGHTING FIXTURE(S) - TWIN LUMINAIRE AT 90 DEGREE.
	BUILDING MOUNTED FLOOD LIGHTING FIXTURE(S).
	LIGHTING FIXTURE - EXTERIOR BOLLARD.
	CONDUIT AND WIRING

7th STREET SOUTH

1 STOFFEL COURT SITE
1" = 20'-0"

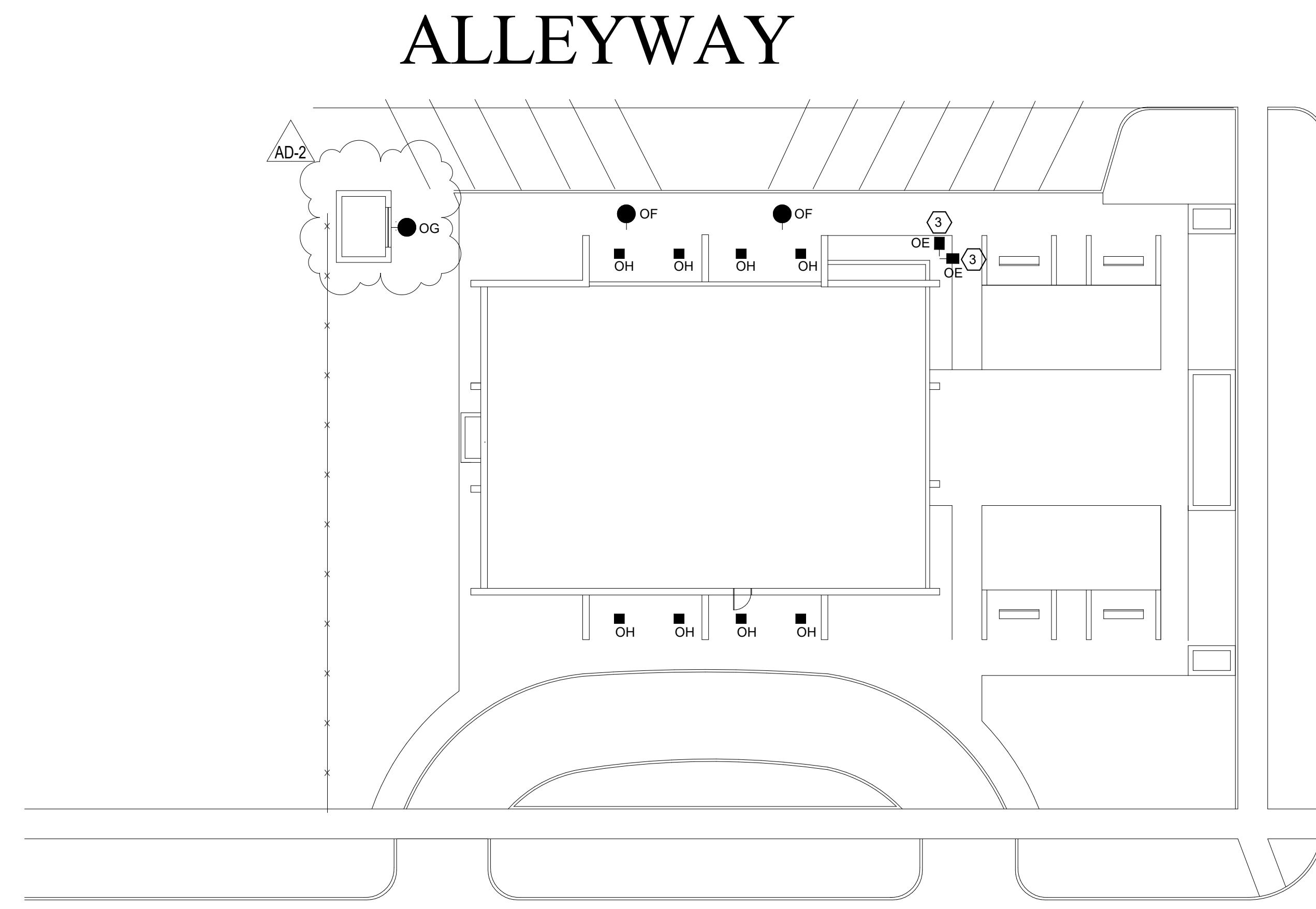
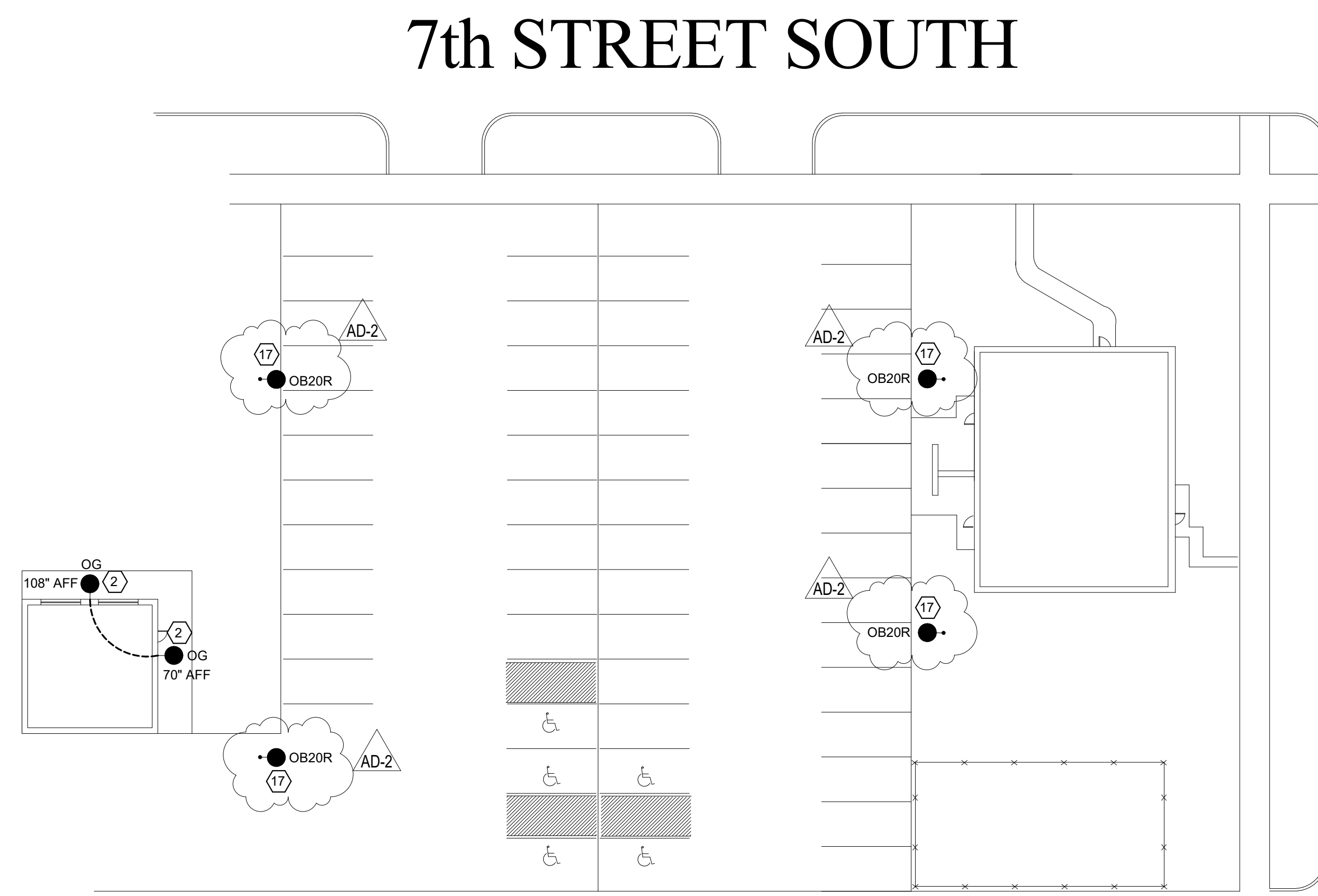


Consultant:

LA CROSSE HOUSING AUTHORITY
LHA 2020 CAPITAL IMPROVEMENTS PROJECTS
Project Location: LA CROSSE, WI 54601
Sheet Title: STOKKE TOWER

GENERAL NOTES REMOVAL AND REMODEL	
A	ELECTRICAL CONTRACTOR TO REMOVE ALL LIGHTING EXISTING EXTERIOR LIGHTING FIXTURES AND REPLACE WITH NEW FIXTURE AT SAME EXACT LOCATION. SITE POLES/FIXTURES, WALL PAKS, FLOOD LIGHTS, UNDER CANOPY LIGHTS, AND LIGHTING BOLLARDS.
B	E.C. SHALL REUSE ALL EXISTING CONDUIT AND WIRING, BRANCH CIRCUITS, SWITCH LEG, AND CONTROL FOR ALL REPLACED LIGHTING, UNLESS NOTED OTHERWISE.
C	LIGHTING FIXTURES TO BE REPLACED ONE FOR ONE UNLESS NOTED OTHERWISE.
D	E.C. TO REUSE EXISTING POLE BASES, ASSOCIATED POLES, ANCHOR BOLTS AND EXTEND ALL WIRING AND CONDUIT AS NECESSARY FOR MOUNTING OF NEW FIXTURE UNLESS NOTED OTHERWISE.
E	ELECTRICAL CONTRACTOR SHALL REMOVE AND DISPOSE OF ALL EXISTING LIGHTING FIXTURES IN AREA OF WORK UNLESS NOTED OTHERWISE.
F	ELECTRICAL CONTRACTOR SHALL EXTEND ALL CONDUIT AND WIRING OF ALL RELOCATED ITEMS.
G	THE WORD "PROVIDE" MEANS TO FURNISH AND INSTALL.
H	REPAINT ALL EXISTING TO REMAIN SITE POLES TO MATCH NEW FIXTURE DARK BRONZE FINISH.
I	ALL NEW SITE POLE LIGHTING FIXTURES SHALL BE EQUIPPED WITH INTEGRAL PHOTOCELL, PHOTO ON / PHOTO OFF.

KEY NOTES : (8)	
1.	TYPICAL ONE FOR ONE LIGHT FIXTURE REPLACEMENT FOR ALL RESIDENTIAL UNITS SHOWN THIS SHEET.
2.	PROVIDE NEW LIGHT FIXTURE AND PROVIDE ALL CONDUIT, WIRE, AND TIE TO NEAREST BRANCH CIRCUIT. PHOTO ON / PHOTO OFF THROUGH INTEGRAL PHOTOCELL.
3.	MOUNT NEW FLOOD LIGHT FIXTURE TO EXISTING MOUNTING BASE.
4.	LIGHT FIXTURE MOUNTED ABOVE ENTRANCE DOOR.
5.	E.C. TO REPLACE DAMAGED BASE COVER.
6.	PROVIDE NEW WALL PAK TYPE "OF" 144" AFF. ENERGIZE THROUGH NEAREST EXTERIOR BRANCH LIGHTING CIRCUIT. PROVIDE ALL CONDUIT, WIRING, PHOTO ON / PHOTO OFF THROUGH INTEGRAL PHOTOCELL. PROVIDE 20A-1PHASE BRANCH BREAKER FROM EXISTING METER.
7.	PROVIDE NEW SITE POLE, BASE, AND FIXTURE. SEE 28300 FOR POLE BASE DETAIL.
8.	ELECTRICAL CONTRACTOR TO TRENCH FOR NEW UNDERGROUND CONDUIT TO NEW LIGHT POLE. ENERGIZE NEW SITE POLE FROM EXISTING GARAGE PANEL.
9.	E.C. TO COORDINATE WITH LOCAL UTILITY FOR THE REMOVAL OF OVERHEAD POWER LINE FEEDING SITE POLE TO BE REMOVED.
10.	ELECTRICAL CONTRACTOR SHALL BE RESPONSIBLE FOR TRENCHING AND BORE THROUGH BELOW CEMENT SLAB/SIDEWALK. E.C. TO PATCH/REPAIR ONCE COMPLETED.
11.	PROVIDE NEW WALL PAK TYPE "OF" 144" AFF. PHOTO ON / OFF THROUGH INTEGRAL PHOTOCELL. PROVIDE 20A-1PHASE REFEED BRANCH CIRCUIT WIRING IF REQUIRED. PROVIDE CONDUIT IF REQUIRED. REPAIR EXISTING CONDUIT AND WIRING.
12.	PROVIDE NEW SITE POLE, BASE AND FIXTURE. REFER TO 28300 FOR POLE BASE DETAIL.
13.	NEW FIXTURE TO BE PIER MOUNTED ON TOP OF BLOCK WALL. PROVIDE ALL NECESSARY MOUNTING.
14.	REMOVE EXISTING POLE AND FIXTURE, CAP AND FILL FLUSH TO CONCRETE PATIO.
15.	POLE AND BASE TO REMAIN FIXTURE ONLY TO BE REPLACED. STRIP AND REPAINT POLE AND BASE TO MATCH DARK BRONZE FIXTURE FINISH.
16.	BASE TO REMAIN BOLLARD FIXTURE ONLY TO BE REPLACED.
17.	BASE TO REMAIN BOLLARD FIXTURE ONLY TO BE REPLACED.
18.	BASE TO BE MODIFIED SEE 28300 FOR DETAIL. EXTEND CONDUIT AND WIRING, NEW POLE AND FIXTURE.
19.	STUB CONDUIT UP CORNER OF THE BUILDING AND INTO SOFFET FOR RUN TO EXISTING BACK BOX BY SIDE DOOR ENTRANCE. SEE DETAIL 25401 THIS SHEET.
20.	PROVIDE NEW BACK BOX TO SUPPORT NEW FIXTURE AND CONDUIT FOR NEW SITE POLE.
21.	REINSTALL POWER RECEPTACLE AND CAMERA. PRESERVE CAMERA VIEW.
22.	REINSTALL TWO CAMERAS. PRESERVE CAMERA VIEWS.
23.	RELOCATE NEW BASE AND FIXTURE AS NEEDED TO PRESERVE BRANCH CIRCUIT WIRING.
24.	



DIVISION STREET

REFERENCE TAGS	
	KEY NOTE

LIGHTING SYMBOLS	
REFER TO LIGHTING FIXTURES SCHEDULE FOR ALL LUMINAIRE TYPES WHETHER WALL MOUNTED OR CEILING MOUNTED.	
	LIGHTING FIXTURE CIRCUIT SWITCH LEG. NO DESIGNATION INDICATES PORTION OF CIRCUIT SWITCHED FROM LOCAL SWITCH OR OCCUPANCY SENSOR. FIXTURE DESIGNATION (SEE SCHEDULE) SWITCHING DEVICE. NO DESIGNATION INDICATES PORTION OF CIRCUIT SWITCHED FROM LOCAL SWITCH OR OCCUPANCY SENSOR. (R) CIRCUIT SWITCHED VIA RELAY IN RELAY CABINET MOUNTED NEXT TO LIGHTING PANEL. CIRCUIT NUMBER.
	LIGHTING FIXTURE - EXTERIOR SCENCE.
	LIGHTING FIXTURE DOWNLIGHT - SURFACE SQUARE TYPE.
	LIGHTING FIXTURE DOWNLIGHT - RECESSED ROUND TYPE.
	POLE MOUNTED AREA LIGHTING FIXTURE(S) - SINGLE LUMINAIRE.
	POLE MOUNTED AREA LIGHTING FIXTURE(S) - TWIN LUMINAIRE AT 90 DEGREE.
	BUILDING MOUNTED FLOOD LIGHTING FIXTURE(S).
	LIGHTING FIXTURE - EXTERIOR BOLLARD.
	CONDUIT AND WIRING

6th STREET SOUTH

1 STOKKE TOWER
1" = 20'-0"

Project Title: LA CROSSE HOUSING AUTHORITY
LHA 2020 CAPITAL IMPROVEMENTS PROJECTS

HSR Project Number: 20040

Project Date: AUGUST 2020

Drawn By: C. CRANDALL

Key Plan:

No.	Description	Date
AD-2	ADDENDUM 2	8-21-20

Graphic Scale: 0' 5' 10' 20' 30'

Last Update: 8/21/2020 7:48:14 AM

E200



Consultant:

LA CROSSE HOUSING AUTHORITY
LHA 2020 CAPITAL IMPROVEMENTS PROJECTS

Project Location: LA CROSSE, WI 54601

SCHUH HOMES

Project Title:

HSR Project Number:
20040

Project Date:
AUGUST 2020

Drawn By:
C. CRANDALL

Key Plan:

No.	Description	Date
AD-2	ADDENDUM 2	8-21-20

Graphic Scale:
0' 7.5' 15' 30' 45'

Last Update:
8/21/2020 7:48:15 AM

E400

GENERAL NOTES REMOVAL AND REMODEL

- A ELECTRICAL CONTRACTOR TO REMOVE ALL LIGHTING EXISTING EXTERIOR LIGHTING FIXTURES AND REPLACE WITH NEW FIXTURE AT SAME EXACT LOCATION. SITE POLES/FIXTURES, WALL PAKS, FLOOD LIGHTS, UNDER CANOPY LIGHTS, AND LIGHTING BOLLARDS.
- B E.C. SHALL REUSE ALL EXISTING CONDUIT AND WIRING, BRANCH CIRCUITS, SWITCH LEG, AND CONTROL FOR ALL REPLACED LIGHTING UNLESS NOTED OTHERWISE.
- C LIGHTING FIXTURES TO BE REPLACED ONE FOR ONE UNLESS NOTED OTHERWISE.
- D E.C. TO REUSE EXISTING POLE BASES (ASSOCIATED POLES) AND/OR BOLTS AND EXTEND ALL WIRING AND CONDUIT AS NECESSARY FOR MOUNTING OF NEW FIXTURE UNLESS NOTED OTHERWISE.
- E ELECTRICAL CONTRACTOR SHALL REMOVE AND DISPOSE OF ALL EXISTING LIGHTING FIXTURES IN AREA OF WORK UNLESS NOTED OTHERWISE.
- F ELECTRICAL CONTRACTOR SHALL EXTEND ALL CONDUIT AND WIRING OF ALL RELOCATED ITEMS.
- G THE WORD "PROVIDE" MEANS TO FURNISH AND INSTALL.
- H REPAINT ALL EXISTING TO REMAIN SITE POLES TO MATCH NEW FIXTURE DARK BRONZE FINISH.
- I ALL NEW SITE POLE LIGHTING FIXTURES SHALL BE EQUIPPED WITH INTEGRAL PHOTOCELL, PHOTO ON / PHOTO OFF.

KEY NOTES : (#)

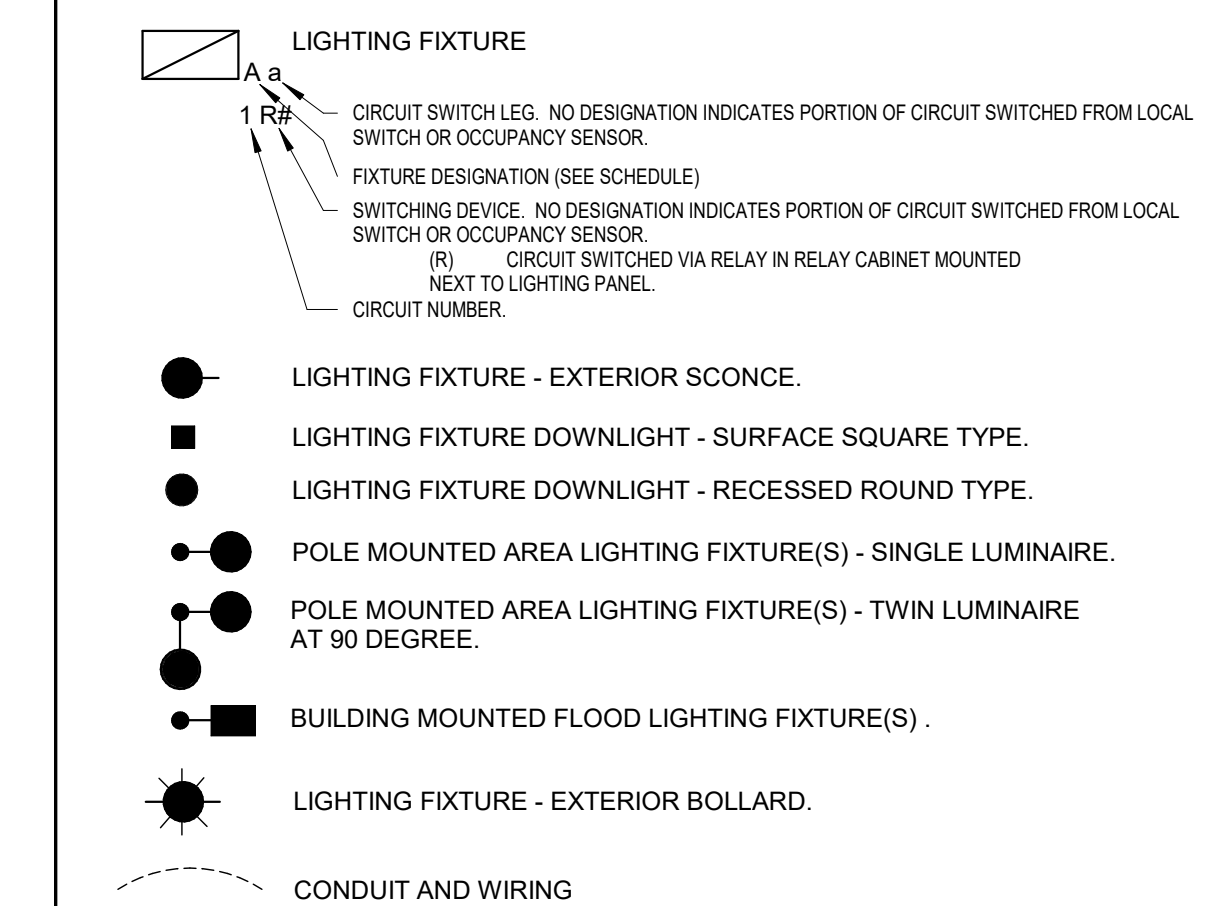
- 1. TYPICAL ONE FOR ONE LIGHT FIXTURE REPLACEMENT FOR ALL RESIDENTIAL UNITS SHOWN THIS SHEET.
- 2. PROVIDE NEW LIGHT FIXTURE AND PROVIDE ALL CONDUIT, WIRE, AND TIE TO NEAREST BRANCH CIRCUIT. PHOTO ON / PHOTO OFF THROUGH INTEGRAL PHOTOCELL.
- 3. MOUNT NEW FLOOD LIGHT FIXTURE TO EXISTING MOUNTING BASE.
- 4. LIGHT FIXTURE MOUNTED ABOVE ENTRANCE DOOR.
- 5. E.C. TO REPLACE DAMAGED BASE COVER.
- 6. PROVIDE NEW WALL PAK TYPE "OP" 144" AFF. ENERGIZE THROUGH NEAREST EXTERIOR BRANCH LIGHTING CIRCUIT. PROVIDE ALL CONDUIT, WIRING, PHOTO ON / PHOTO OFF THROUGH INTEGRAL PHOTOCELL.
- 7. PROVIDE NEW SITE POLE, BASE, AND FIXTURE. SEE 3E800 FOR POLE BASE DETAIL.
- 8. ELECTRICAL CONTRACTOR TO TRENCH FOR NEW UNDERGROUND CONDUIT TO NEW LIGHT POLE. ENERGIZE NEW SITE POLE FROM EXISTING GARAGE PANEL.
- 9. E.C. TO COORDINATE WITH LOCAL UTILITY FOR THE REMOVAL OF OVERHEAD POWER LINE FEEDING SITE POLE TO BE REMOVED.
- 10. ELECTRICAL CONTRACTOR SHALL BE RESPONSIBLE FOR TRENCHING AND BORE THROUGH BELOW CEMENT SLAB/SIDEWALK. E.C. TO PATCH/REPAIR ONCE COMPLETED.
- 11. PROVIDE NEW WALL PAK TYPE "OP" 144" AFF. PHOTO ON / OFF THROUGH INTEGRAL PHOTOCELL. PROVIDE 20A-1PHASE BRANCH BREAKER FROM EXISTING METER.
- 12. REFEED BRANCH CIRCUIT WIRING IF REQUIRED. PROVIDE CONDUIT IF REQUIRED. REPAIR EXISTING CONDUIT AND WIRING.
- 13. PROVIDE NEW SITE POLE, BASE AND FIXTURE. REFER TO 2E800 FOR POLE BASE DETAIL.
- 14. NEW FIXTURE TO BE PIER MOUNTED ON TOP OF BLOCK WALL. PROVIDE ALL NECESSARY MOUNTING.
- 15. REMOVE EXISTING POLE AND FIXTURE. CAP AND FILL FLUSH TO CONCRETE PATIO.
- 16. POLE AND BASE TO REMAIN FIXTURE ONLY TO BE REPLACED. STRIP AND REPAINT POLE AND BASE TO MATCH DARK BRONZE FIXTURE FINISH.
- 17. BASE TO REMAIN FIXTURE AND POLE ONLY TO BE REPLACED.
- 18. BASE TO REMAIN BOLLARD FIXTURE ONLY TO BE REPLACED.
- 19. BASE TO BE MODIFIED SEE 3E800 FOR DETAIL. EXTEND CONDUIT AND WIRING. NEW POLE AND FIXTURE.
- 20. SUB CONDUIT UP CORNER OF THE BUILDING AND INTO SOFFET FOR RUN TO EXISTING BACK BOX BY SIDE DOOR ENTRANCE. SEE DETAIL 2E401 THIS SHEET.
- 21. PROVIDE NEW BACK BOX TO SUPPORT NEW FIXTURE AND CONDUIT FOR NEW SITE POLE.
- 22. REINSTALL POWER RECEPTACLE AND CAMERA, PRESERVE CAMERA VIEW.
- 23. REINSTALL TWO CAMERAS, PRESERVE CAMERA VIEWS.
- 24. RELOCATE NEW BASE AND FIXTURE AS NEEDED TO PRESERVE BRANCH CIRCUIT WIRING.

REFERENCE TAGS

KEY NOTE

LIGHTING SYMBOLS

REFER TO LIGHTING FIXTURES SCHEDULE FOR ALL LUMINAIRE TYPES WHETHER WALL MOUNTED OR CEILING MOUNTED.



NO WORK THIS AREA ON THIS SHEET

1 SCHUH HOMES SITE
1" = 30'-0"





Consultant:

LA CROSSE HOUSING AUTHORITY
LHA 2020 CAPITAL IMPROVEMENTS PROJECTS

Project Location: LA CROSSE, WI 54601

SCHUH HOMES REC AND HEADSTART

Project Title:

HSR Project Number: 20040

Project Date: AUGUST 2020

Drawn By: C. CRANDALL

Key Plan:

Revisions:

No. Description Date

AD-2 ADDENDUM 2 8-21-20

Graphic Scale:

0' 5' 10' 20' 30'

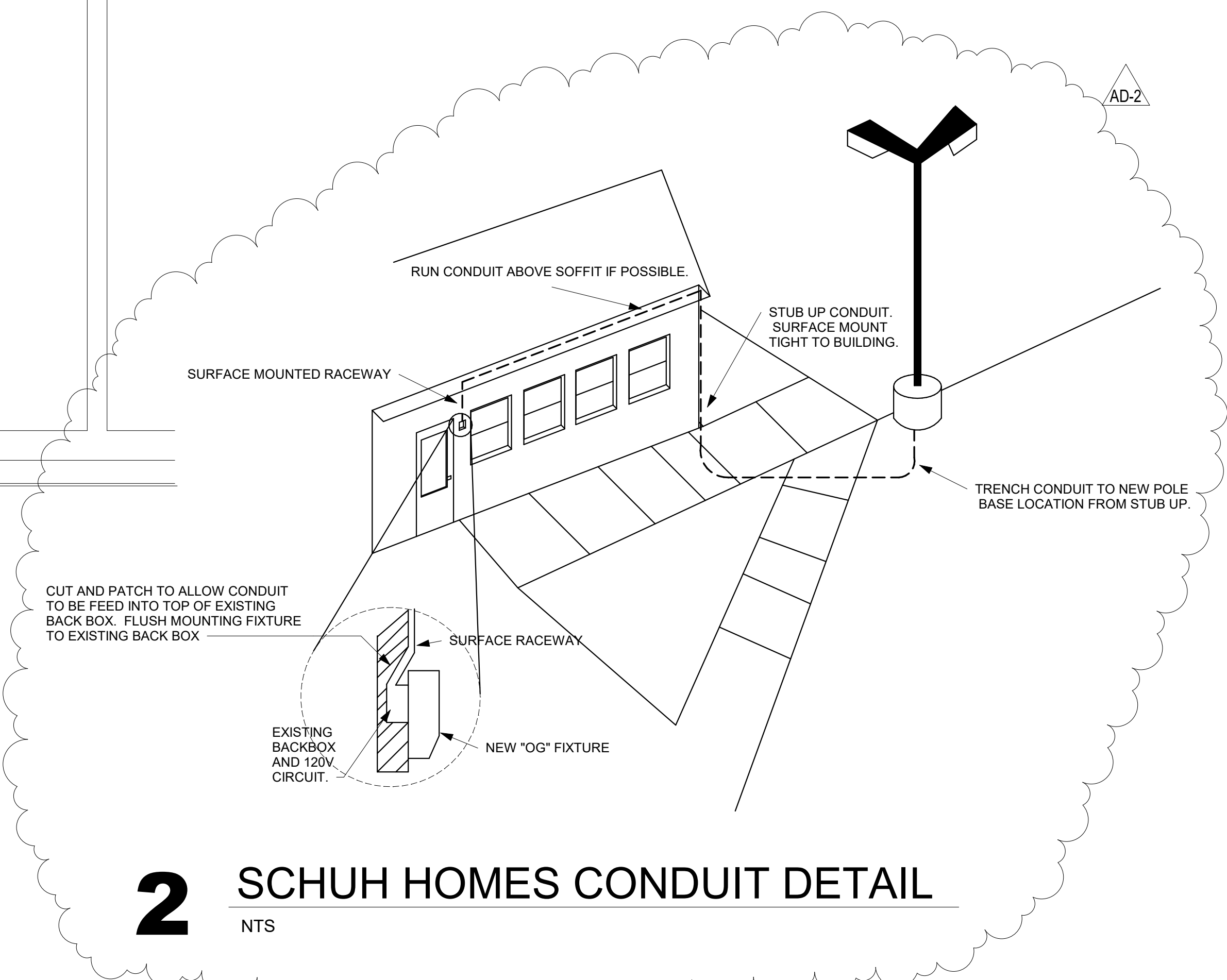
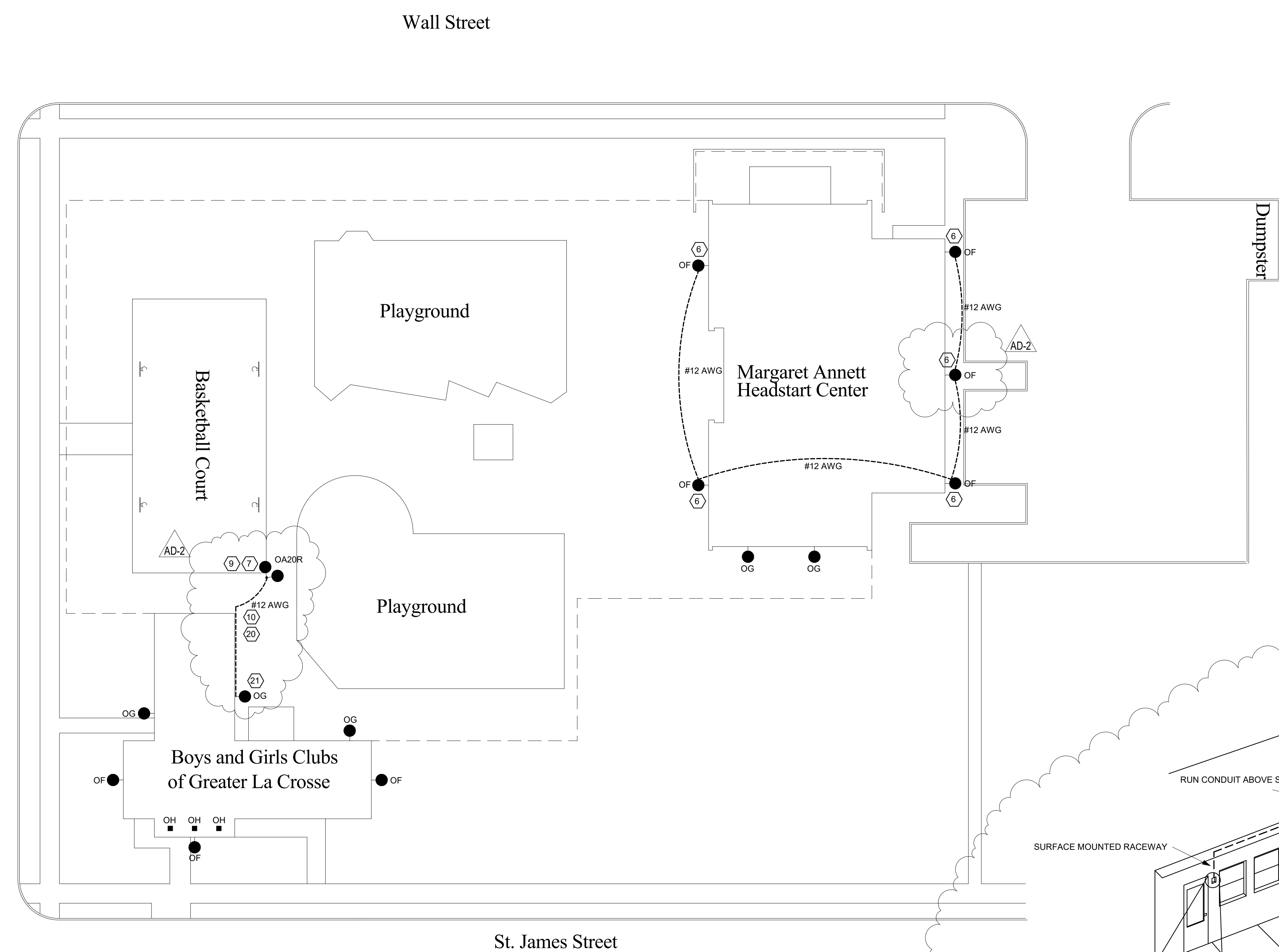
Last Update:

8/21/2020 7:48:16 AM

E401

GENERAL NOTES REMOVAL AND REMODEL	
A	ELECTRICAL CONTRACTOR TO REMOVE ALL LIGHTING EXISTING EXTERIOR LIGHTING FIXTURES AND REPLACE WITH NEW FIXTURE AT SAME EXACT LOCATION. SITE POLES/FIXTURES, WALL PAKS, FLOOD LIGHTS, UNDER CANOPY LIGHTS, AND LIGHTING BOLLARDS.
B	E.C. SHALL REUSE ALL EXISTING CONDUIT AND WIRING, BRANCH CIRCUITS, SWITCH LEG, AND CONTROL FOR ALL REPLACED LIGHTING, UNLESS NOTED OTHERWISE.
C	LIGHTING FIXTURES TO BE REPLACED ONE FOR ONE UNLESS NOTED OTHERWISE.
D	E.C. TO REUSE EXISTING POLE BASES, ASSOCIATED POLES, ANCHOR BOLTS AND EXTEND ALL WIRING AND CONDUIT AS NECESSARY FOR MOUNTING OF NEW FIXTURE UNLESS NOTED OTHERWISE.
E	ELECTRICAL CONTRACTOR SHALL REMOVE AND DISPOSE OF ALL EXISTING LIGHTING FIXTURES IN AREA OF WORK UNLESS NOTED OTHERWISE.
F	ELECTRICAL CONTRACTOR SHALL EXTEND ALL CONDUIT AND WIRING OF ALL RELOCATED ITEMS.
G	THE WORD "PROVIDE" MEANS TO FURNISH AND INSTALL.
H	REPAINT ALL EXISTING TO REMAIN SITE POLES TO MATCH NEW FIXTURE DARK BRONZE FINISH.
I	ALL NEW SITE POLE LIGHTING FIXTURES SHALL BE EQUIPPED WITH INTEGRAL PHOTOCELL, PHOTO ON / PHOTO OFF.

KEY NOTES : (K)	
1.	TYPICAL ONE FOR ONE LIGHT FIXTURE REPLACEMENT FOR ALL RESIDENTIAL UNITS SHOWN THIS SHEET.
2.	PROVIDE NEW LIGHT FIXTURE AND PROVIDE ALL CONDUIT, WIRE, AND TIE TO NEAREST BRANCH CIRCUIT. PHOTO ON / PHOTO OFF THROUGH INTEGRAL PHOTOCELL.
3.	MOUNT NEW FLOOD LIGHT FIXTURE TO EXISTING MOUNTING BASE.
4.	LIGHT FIXTURE MOUNTED ABOVE ENTRANCE DOOR.
5.	E.G. TO REPLACE DAMAGED BASE COVER.
6.	PROVIDE NEW WALL PAK TYPE OF 144" AFF. ENERGIZE THROUGH NEAREST EXTERIOR BRANCH LIGHTING CIRCUIT. PROVIDE ALL CONDUIT, WIRING, PHOTO ON / PHOTO OFF THROUGH INTEGRAL PHOTOCELL.
7.	PROVIDE NEW SITE POLE, BASE, AND FIXTURE. SEE 3800 FOR POLE BASE DETAIL.
8.	ELECTRICAL CONTRACTOR TO TRENCH FOR NEW UNDERGROUND CONDUIT TO NEW LIGHT POLE. ENERGIZE NEW SITE POLE FROM EXISTING GARAGE PANEL.
9.	E.C. TO COORDINATE WITH LOCAL UTILITY FOR THE REMOVAL OF OVERHEAD POWER LINE FEEDING SITE POLE TO BE REMOVED.
10.	ELECTRICAL CONTRACTOR SHALL BE RESPONSIBLE FOR TRENCHING AND BORE THROUGH BELOW CEMENT SLAB/SIDEWALK. E.C. TO PATCH/REPAIR ONCE COMPLETED.
11.	PROVIDE NEW WALL PAK TYPE OF 144" AFF. PHOTO ON / OFF THROUGH INTEGRAL PHOTOCELL. PROVIDE 20A-1PHASE BRANCH BREAKER FROM EXISTING METER.
12.	REFEED BRANCH CIRCUIT WIRING IF REQUIRED. PROVIDE CONDUIT IF REQUIRED. REPAIR EXISTING CONDUIT AND WIRING.
13.	PROVIDE NEW SITE POLE, BASE AND FIXTURE. REFER TO 2800 FOR POLE BASE DETAIL.
14.	NEW FIXTURE TO BE PIER MOUNTED ON TOP OF BLOCK WALL. PROVIDE ALL NECESSARY MOUNTING.
15.	REMOVE EXISTING POLE AND FIXTURE. CAP AND FILL FLUSH TO CONCRETE PATIO.
16.	POLE AND BASE TO REMAIN FIXTURE ONLY TO BE REPLACED. STRIP AND REPAINT POLE AND BASE TO MATCH DARK BRONZE FIXTURE FINISH.
17.	BASE TO REMAIN FIXTURE AND POLE ONLY TO BE REPLACED.
18.	BASE TO REMAIN BOLLARD FIXTURE ONLY TO BE REPLACED.
19.	BASE TO BE MODIFIED SEE 5800 FOR DETAIL. EXTEND CONDUIT AND WIRING. NEW POLE AND FIXTURE.
20.	STUB CONDUIT UP CORNER OF THE BUILDING AND INTO SOFFIT FOR RUN TO EXISTING BACK BOX BY SIDE DOOR ENTRANCE. SEE DETAIL 2E41 THIS SHEET.
21.	PROVIDE NEW BACK BOX TO SUPPORT NEW FIXTURE AND CONDUIT FOR NEW SITE POLE.
22.	REINSTALL POWER RECEPTACLE AND CAMERA. PRESERVE CAMERA VIEW.
23.	REINSTALL TWO CAMERAS. PRESERVE CAMERA VIEWS.
24.	RELOCATE NEW BASE AND FIXTURE AS NEEDED TO PRESERVE BRANCH CIRCUIT WIRING.



1 SCHUH HOMES REC SITE
1" = 20'-0"

2 SCHUH HOMES CONDUIT DETAIL
NTS

REFERENCE TAGS	
(K)	KEY NOTE

LIGHTING SYMBOLS	
REFER TO LIGHTING FIXTURES SCHEDULE FOR ALL LUMINAIRE TYPES WHETHER WALL MOUNTED OR CEILING MOUNTED.	
(L)	LIGHTING FIXTURE
(L) (S)	CIRCUIT SWITCH LEG. NO DESIGNATION INDICATES PORTION OF CIRCUIT SWITCHED FROM LOCAL SWITCH OR OCCUPANCY SENSOR.
(L) (S) (R)	FIXTURE DESIGNATION (SEE SCHEDULE).
(L) (S) (R) (C)	SWITCHING DEVICE. NO DESIGNATION INDICATES PORTION OF CIRCUIT SWITCHED FROM LOCAL SWITCH OR OCCUPANCY SENSOR.
(L) (S) (R) (C) (N)	CIRCUIT SWITCHED VIA RELAY IN RELAY CABINET MOUNTED NEXT TO LIGHTING PANEL. CIRCUIT NUMBER.
(S)	LIGHTING FIXTURE - EXTERIOR SCENCE.
(S) (SQ)	LIGHTING FIXTURE DOWNLIGHT - SURFACE SQUARE TYPE.
(S) (R)	LIGHTING FIXTURE DOWNLIGHT - RECESSED ROUND TYPE.
(S) (P)	POLE MOUNTED AREA LIGHTING FIXTURE(S) - SINGLE LUMINAIRE.
(S) (P) (T)	POLE MOUNTED AREA LIGHTING FIXTURE(S) - TWIN LUMINAIRE AT 90 DEGREE.
(S) (F)	BUILDING MOUNTED FLOOD LIGHTING FIXTURE(S).
(S) (B)	LIGHTING FIXTURE - EXTERIOR BOLLARD.
(C)	CONDUIT AND WIRING

No.	Description	Date
AD-2	ADDENDUM 2	8-21-20

Graphic Scale: 0' 5' 10' 20' 30'

Last Update: 8/21/2020 7:48:16 AM

E401



Consultant:

LA CROSSE HOUSING AUTHORITY
LHA 2020 CAPITAL IMPROVEMENTS PROJECTS

Project Location: LA CROSSE, WI 54601

GROVER HOMES

Project Title:

HSR Project Number:
20040

Project Date:
AUGUST 2020

Drawn By:
C. CRANDALL

Key Plan:

No.	Description	Date
AD-2	ADDENDUM 2	8-21-20

Graphic Scale:
0' 7.5' 15' 30' 45'

Last Update:
8/21/2020 7:48:16 AM

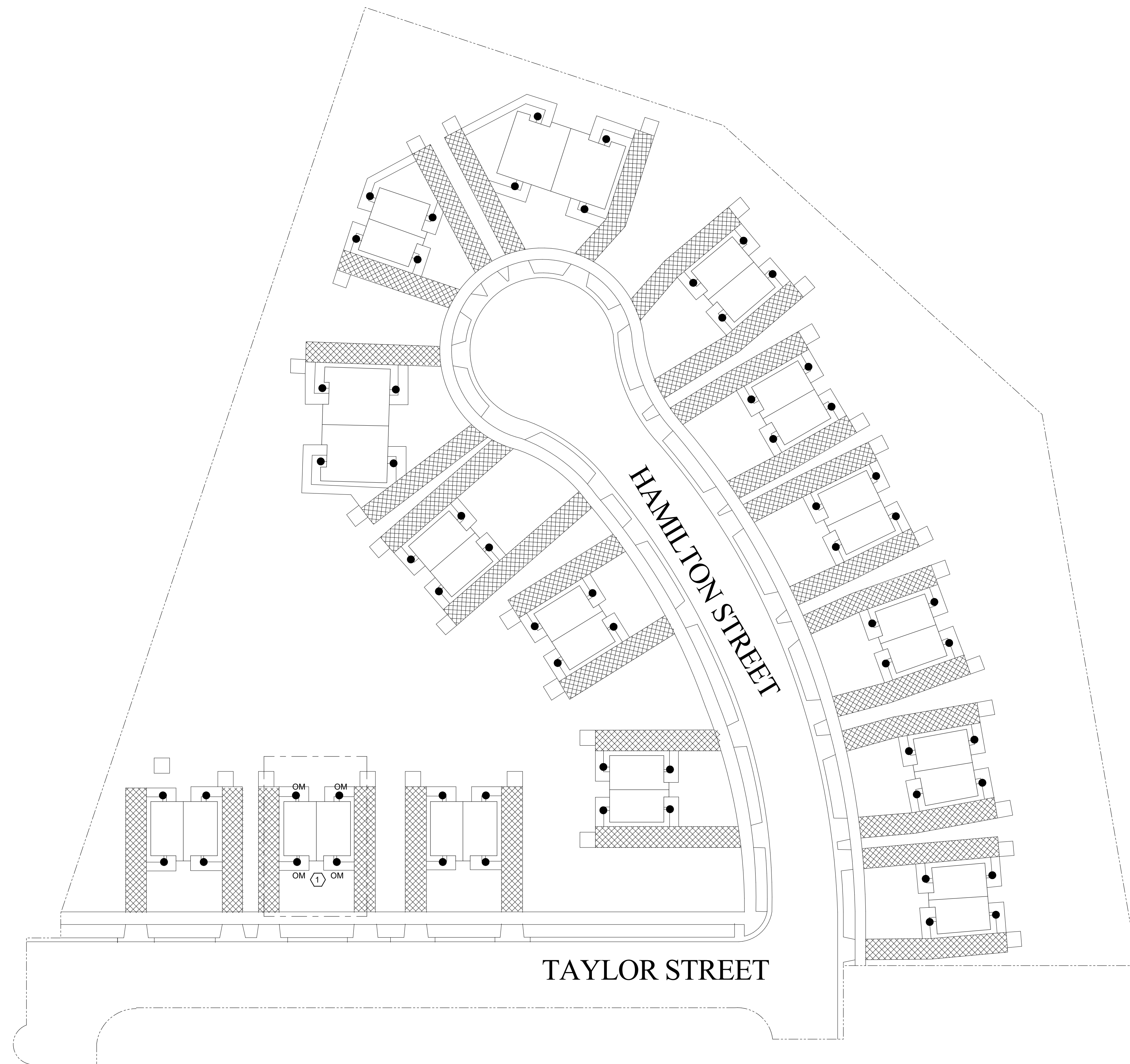
E500

GENERAL NOTES REMOVAL AND REMODEL

- A ELECTRICAL CONTRACTOR TO REMOVE ALL LIGHTING EXISTING EXTERIOR LIGHTING FIXTURES AND REPLACE WITH NEW FIXTURE AT SAME EXACT LOCATION. SITE POLES/FIXTURES, WALL PAKS, FLOOD LIGHTS, UNDER CANOPY LIGHTS, AND LIGHTING BOLLARDS.
- B E.C. SHALL REUSE ALL EXISTING CONDUIT AND WIRING, BRANCH CIRCUITS, SWITCH LEG, AND CONTROL FOR ALL REPLACED LIGHTING, UNLESS NOTED OTHERWISE.
- C LIGHTING FIXTURES TO BE REPLACED ONE FOR ONE UNLESS NOTED OTHERWISE.
- D E.C. TO REUSE EXISTING POLE BASES, ASSOCIATED POLES, ANCHOR BOLTS AND EXTEND ALL WIRING AND CONDUIT AS NECESSARY FOR MOUNTING OF NEW FIXTURE UNLESS NOTED OTHERWISE.
- E ELECTRICAL CONTRACTOR SHALL REMOVE AND DISPOSE OF ALL EXISTING LIGHTING FIXTURES IN AREA OF WORK UNLESS NOTED OTHERWISE.
- F ELECTRICAL CONTRACTOR SHALL EXTEND ALL CONDUIT AND WIRING OF ALL RELOCATED ITEMS.
- G THE WORD "PROVIDE" MEANS TO FURNISH AND INSTALL.
- H REPAINT ALL EXISTING TO REMAIN SITE POLES TO MATCH NEW FIXTURE DARK BRONZE FINISH.
- I ALL NEW SITE POLE LIGHTING FIXTURES SHALL BE EQUIPPED WITH INTEGRAL PHOTOCELL, PHOTO ON / PHOTO OFF.

KEY NOTES : (H)

- 1. TYPICAL ONE FOR ONE LIGHT FIXTURE REPLACEMENT FOR ALL RESIDENTIAL UNITS SHOWN THIS SHEET.
- 2. PROVIDE NEW LIGHT FIXTURE AND PROVIDE ALL CONDUIT, WIRE, AND TIE TO NEAREST BRANCH CIRCUIT. PHOTO ON / PHOTO OFF THROUGH INTEGRAL PHOTOCELL.
- 3. MOUNT NEW FLOOD LIGHT FIXTURE TO EXISTING MOUNTING BASE.
- 4. LIGHT FIXTURE MOUNTED ABOVE ENTRANCE/DOOR.
- 5. E.C. TO REPLACE DAMAGED BASE COVER.
- 6. PROVIDE NEW WALL PAK TYPE OF 144" AFF. ENERGIZE THROUGH NEAREST EXTERIOR BRANCH LIGHTING CIRCUIT. PROVIDE ALL CONDUIT, WIRING, PHOTO ON / PHOTO OFF THROUGH INTEGRAL PHOTOCELL.
- 7. PROVIDE NEW SITE POLE, BASE, AND FIXTURE. SEE 3E800 FOR POLE BASE DETAIL.
- 8. ELECTRICAL CONTRACTOR TO TRENCH FOR NEW UNDERGROUND CONDUIT TO NEW LIGHT POLE. ENERGIZE NEW SITE POLE FROM EXISTING GARAGE PANEL.
- 9. E.C. TO COORDINATE WITH LOCAL UTILITY FOR THE REMOVAL OF OVERHEAD POWER LINE FEEDING SITE POLE TO BE REMOVED.
- 10. ELECTRICAL CONTRACTOR SHALL BE RESPONSIBLE FOR TRENCHING AND BORE THROUGH BELOW CEMENT SLAB/SIDEWALK. E.C. TO PATCH/REPAIR ONCE COMPLETED.
- 11. PROVIDE NEW WALL PAK TYPE OF 144" AFF. PHOTO ON / OFF THROUGH INTEGRAL PHOTOCELL. PROVIDE 20A-1PHASE BRANCH BREAKER FROM EXISTING METER.
- 12. REFEED BRANCH CIRCUIT WIRING IF REQUIRED. PROVIDE CONDUIT IF REQUIRED. REPAIR EXISTING CONDUIT AND WIRING.
- 13. PROVIDE NEW SITE POLE, BASE AND FIXTURE. REFER TO 2E800 FOR POLE BASE DETAIL.
- 14. NEW FIXTURE TO BE PIER MOUNTED ON TOP OF BLOCK WALL. PROVIDE ALL NECESSARY MOUNTING.
- 15. REMOVE EXISTING POLE AND FIXTURE. CAP AND FILL FLUSH TO CONCRETE PATIO.
- 16. POLE AND BASE TO REMAIN FIXTURE ONLY TO BE REPLACED. STRIP AND REPAINT POLE AND BASE TO MATCH DARK BRONZE FIXTURE FINISH.
- 17. BASE TO REMAIN FIXTURE AND POLE ONLY TO BE REPLACED.
- 18. BASE TO REMAIN BOLLARD FIXTURE ONLY TO BE REPLACED.
- 19. BASE TO BE MODIFIED SEE 3E800 FOR DETAIL. EXTEND CONDUIT AND WIRING. NEW POLE AND FIXTURE.
- 20. STUB CONDUIT UP CORNER OF THE BUILDING AND INTO SOFFET FOR RUN TO EXISTING BACK BOX BY SIDE DOOR ENTRANCE. SEE DETAIL 2E401 THIS SHEET.
- 21. PROVIDE NEW BACK BOX TO SUPPORT NEW FIXTURE AND CONDUIT FOR NEW SITE POLE.
- 22. REINSTALL POWER RECEPTACLE AND CAMERA. PRESERVE CAMERA VIEW.
- 23. REINSTALL TWO CAMERAS. PRESERVE CAMERA VIEWS.
- 24. RELOCATE NEW BASE AND FIXTURE AS NEEDED TO PRESERVE BRANCH CIRCUIT WIRING.



REFERENCE TAGS

○	KEY NOTE
---	----------

LIGHTING SYMBOLS

REFER TO LIGHTING FIXTURES SCHEDULE FOR ALL LUMINAIRE TYPES WHETHER WALL MOUNTED OR CEILING MOUNTED.

	LIGHTING FIXTURE
	CIRCUIT SWITCH LEG. NO DESIGNATION INDICATES PORTION OF CIRCUIT SWITCHED FROM LOCAL SWITCH OR OCCUPANCY SENSOR.
	FIXTURE DESIGNATION (SEE SCHEDULE)
	SWITCHING DEVICE. NO DESIGNATION INDICATES PORTION OF CIRCUIT SWITCHED FROM LOCAL SWITCH OR OCCUPANCY SENSOR.
	(R) CIRCUIT SWITCHED VIA RELAY IN RELAY CABINET MOUNTED NEXT TO LIGHTING PANEL.
	CIRCUIT NUMBER.
	LIGHTING FIXTURE - EXTERIOR SCONCE.
	LIGHTING FIXTURE DOWNLIGHT - SURFACE SQUARE TYPE.
	LIGHTING FIXTURE DOWNLIGHT - RECESSED ROUND TYPE.
	POLE MOUNTED AREA LIGHTING FIXTURE(S) - SINGLE LUMINAIRE.
	POLE MOUNTED AREA LIGHTING FIXTURE(S) - TWIN LUMINAIRE AT 90 DEGREE.
	BUILDING MOUNTED FLOOD LIGHTING FIXTURE(S).
	LIGHTING FIXTURE - EXTERIOR BOLLARD.
	CONDUIT AND WIRING

1 GROVER HOMES SITE
1" = 30'-0"



Consultant:

GENERAL NOTES REMOVAL AND REMODEL

- A ELECTRICAL CONTRACTOR TO REMOVE ALL LIGHTING EXISTING EXTERIOR LIGHTING FIXTURES AND REPLACE WITH NEW FIXTURE AT SAME EXACT LOCATION. SITE POLES/FIXTURES, WALL PAKS, FLOOD LIGHTS, UNDER CANOPY LIGHTS, AND LIGHTING BOLLARDS.
- B E.C. SHALL REUSE ALL EXISTING CONDUIT AND WIRING, BRANCH CIRCUITS, SWITCH LEG, AND CONTROL FOR ALL REPLACED LIGHTING, UNLESS NOTED OTHERWISE.
- C LIGHTING FIXTURES TO BE REPLACED ONE FOR ONE UNLESS NOTED OTHERWISE.
- D E.C. TO REUSE EXISTING POLE BASES, ASSOCIATED POLES, ANCHOR BOLTS AND EXTEND ALL WIRING AND CONDUIT AS NECESSARY FOR MOUNTING OF NEW FIXTURE UNLESS NOTED OTHERWISE.
- E ELECTRICAL CONTRACTOR SHALL REMOVE AND DISPOSE OF ALL EXISTING LIGHTING FIXTURES IN AREA OF WORK UNLESS NOTED OTHERWISE.
- F ELECTRICAL CONTRACTOR SHALL EXTEND ALL CONDUIT AND WIRING OF ALL RELOCATED ITEMS.
- G THE WORD "PROVIDE" MEANS TO FURNISH AND INSTALL.
- H REPAINT ALL EXISTING TO REMAIN SITE POLES TO MATCH NEW FIXTURE DARK BRONZE FINISH.
- I ALL NEW SITE POLE LIGHTING FIXTURES SHALL BE EQUIPPED WITH INTEGRAL PHOTOCELL, PHOTO ON / PHOTO OFF.

KEY NOTES :

1. TYPICAL ONE FOR ONE LIGHT FIXTURE REPLACEMENT FOR ALL RESIDENTIAL UNITS SHOWN THIS SHEET.
2. PROVIDE NEW LIGHT FIXTURE AND PROVIDE ALL CONDUIT, WIRE, AND TIE TO NEAREST BRANCH CIRCUIT. PHOTO ON / PHOTO OFF THROUGH INTEGRAL PHOTOCELL.
3. MOUNT NEW FLOOD LIGHT FIXTURE TO EXISTING MOUNTING BASE.
4. LIGHT FIXTURE MOUNTED ABOVE ENTRANCE DOOR.
5. E.C. TO REPLACE DAMAGED BASE COVER.
6. PROVIDE NEW WALL PAK TYPE 'OF' 144" AFF. ENERGIZE THROUGH NEAREST EXTERIOR BRANCH LIGHTING CIRCUIT. PROVIDE ALL CONDUIT, WIRING, PHOTO ON / PHOTO OFF THROUGH INTEGRAL PHOTOCELL.
7. PROVIDE NEW SITE POLE, BASE, AND FIXTURE. SEE 2800 FOR POLE BASE DETAIL.
8. ELECTRICAL CONTRACTOR TO TRENCH FOR NEW UNDERGROUND CONDUIT TO NEW LIGHT POLE. ENERGIZE NEW SITE POLE FROM EXISTING GARAGE PANEL.
9. E.C. TO COORDINATE WITH LOCAL UTILITY FOR THE REMOVAL OF OVERHEAD POWER LINE FEEDING SITE POLE TO BE REMOVED.
10. ELECTRICAL CONTRACTOR SHALL BE RESPONSIBLE FOR TRENCHING AND BORE THROUGH BELOW CEMENT SLAB/SIDEWALK. E.C. TO PATCH/REPAIR ONCE COMPLETED.
11. PROVIDE NEW WALL PAK TYPE 'OF' 144" AFF. PHOTO ON / OFF THROUGH INTEGRAL PHOTOCELL. PROVIDE 20A-1PHASE BRANCH BREAKER FROM EXISTING METER.
12. REFEED BRANCH CIRCUIT WIRING IF REQUIRED. PROVIDE CONDUIT IF REQUIRED. REPAIR EXISTING CONDUIT AND WIRING.
13. PROVIDE NEW SITE POLE, BASE AND FIXTURE. REFER TO 2800 FOR POLE BASE DETAIL.
14. NEW FIXTURE TO BE PIER MOUNTED ON TOP OF BLOCK WALL. PROVIDE ALL NECESSARY MOUNTING.
15. REMOVE EXISTING POLE AND FIXTURE. CAP AND FILL FLUSH TO CONCRETE PATIO.
16. POLE AND BASE TO REMAIN FIXTURE ONLY TO BE REPLACED. STRIP AND REPAINT POLE AND BASE TO MATCH DARK BRONZE FIXTURE FINISH.
17. BASE TO REMAIN FIXTURE AND POLE ONLY TO BE REPLACED.
18. BASE TO REMAIN BOLLARD FIXTURE ONLY TO BE REPLACED.
19. BASE TO BE MODIFIED SEE 5800 FOR DETAIL. EXTEND CONDUIT AND WIRING. NEW POLE AND FIXTURE.
20. STUB CONDUIT UP CORNER OF THE BUILDING AND INTO SOFFIT FOR RUN TO EXISTING BACK BOX BY SIDE DOOR ENTRANCE. SEE DETAIL 2640 THIS SHEET.
21. PROVIDE NEW BACK BOX TO SUPPORT NEW FIXTURE AND CONDUIT FOR NEW SITE POLE.
22. REINSTALL POWER RECEPTACLE AND CAMERA. PRESERVE CAMERA VIEW.
23. REINSTALL TWO CAMERAS. PRESERVE CAMERA VIEWS.
24. RELOCATE NEW BASE AND FIXTURE AS NEEDED TO PRESERVE BRANCH CIRCUIT WIRING.

REFERENCE TAGS

- KEY NOTE

LIGHTING SYMBOLS

REFER TO LIGHTING FIXTURES SCHEDULE FOR ALL LUMINAIRE TYPES WHETHER WALL MOUNTED OR CEILING MOUNTED.

- LIGHTING FIXTURE
- CIRCUIT SWITCH LEG. NO DESIGNATION INDICATES PORTION OF CIRCUIT SWITCHED FROM LOCAL SWITCH OR OCCUPANCY SENSOR.
- FIXTURE DESIGNATION (SEE SCHEDULE)
- SWITCHING DEVICE. NO DESIGNATION INDICATES PORTION OF CIRCUIT SWITCHED FROM LOCAL SWITCH OR OCCUPANCY SENSOR.
- RELAY - CIRCUIT SWITCHED VIA RELAY IN RELAY CABINET MOUNTED NEXT TO LIGHTING PANEL.
- CIRCUIT NUMBER.
- LIGHTING FIXTURE - EXTERIOR SCENCE.
- LIGHTING FIXTURE DOWNLIGHT - SURFACE SQUARE TYPE.
- LIGHTING FIXTURE DOWNLIGHT - RECESSED ROUND TYPE.
- POLE MOUNTED AREA LIGHTING FIXTURE(S) - SINGLE LUMINAIRE.
- POLE MOUNTED AREA LIGHTING FIXTURE(S) - TWIN LUMINAIRE AT 90 DEGREE.
- BUILDING MOUNTED FLOOD LIGHTING FIXTURE(S).
- LIGHTING FIXTURE - EXTERIOR BOLLARD.
- CONDUIT AND WIRING

LA CROSSE HOUSING AUTHORITY
LHA 2020 CAPITAL IMPROVEMENTS PROJECTS

Project Location: LA CROSSE, WI 54601

MULLEN HOMES

Project Title:

HSR Project Number: 20040

Project Date: AUGUST 2020

Drawn By: C. CRANDALL

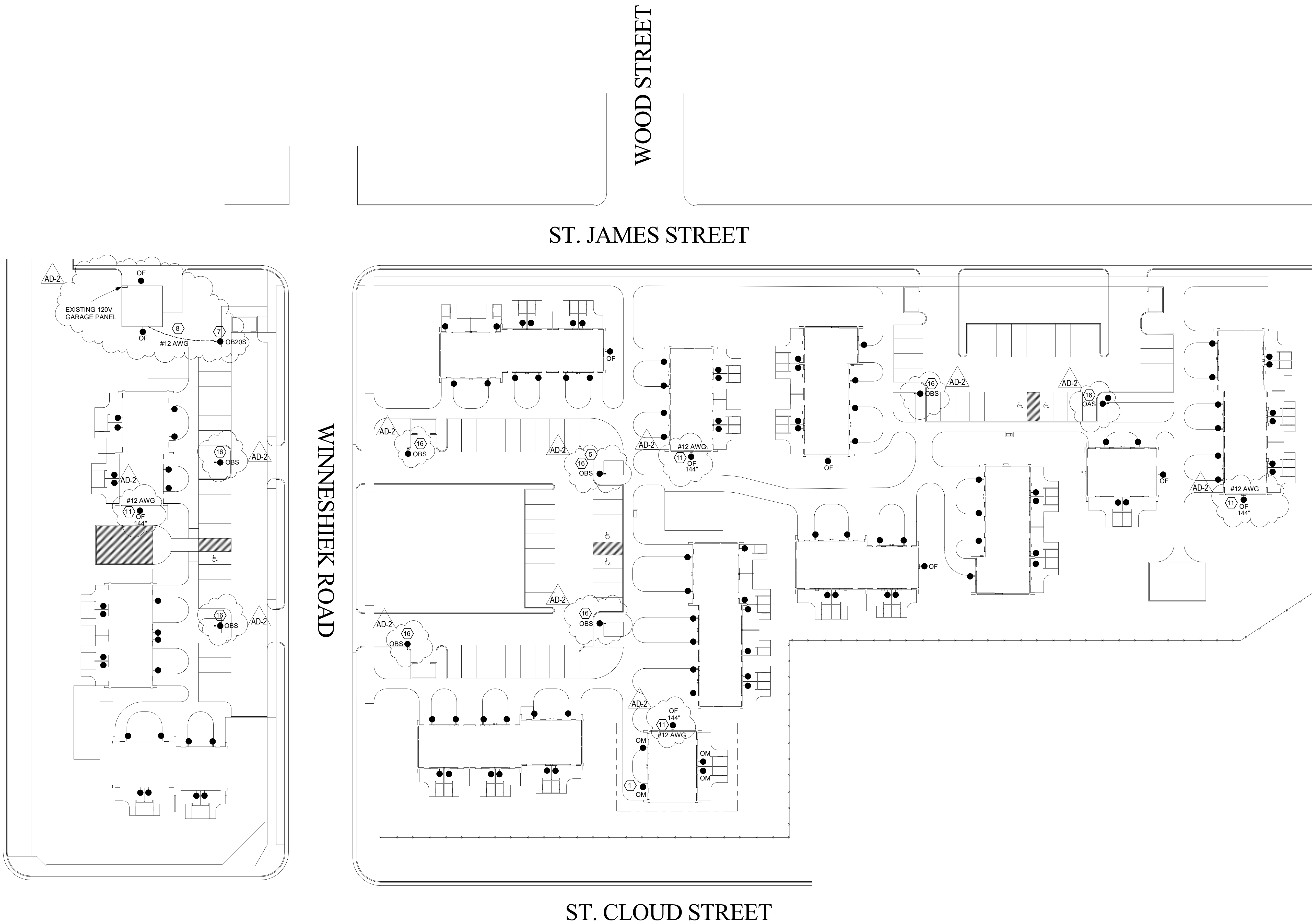
Key Plan:

No.	Description	Date
AD-2	ADDENDUM 2	8-21-20

Graphic Scale: 0' 7.5' 15' 30' 45'

Last Update: 8/21/2020 7:48:17 AM

E600



1 MULLEN HOMES SITE
1" = 30'-0"



Consultant:

Project Title: LA CROSSE HOUSING AUTHORITY
LHA 2020 CAPITAL IMPROVEMENTS PROJECTS
Project Location: LA CROSSE, WI 54601
Sheet Title: HUBER HOMES

HSR Project Number: 20040

Project Date: AUGUST 2020

Drawn By: C. CRANDALL

Key Plan:

No.	Description	Date
AD-2	ADDENDUM 2	8-21-20

Graphic Scale:
0' 7.5' 15' 30' 45'

Last Update: 8/21/2020 7:48:17 AM

E700

GENERAL NOTES REMOVAL AND REMODEL	
A	ELECTRICAL CONTRACTOR TO REMOVE ALL LIGHTING EXISTING EXTERIOR LIGHTING FIXTURES AND REPLACE WITH NEW FIXTURE AT SAME EXACT LOCATION. SITE POLES/FIXTURES, WALL PAKS, FLOOD LIGHTS, UNDER CANOPY LIGHTS, AND LIGHTING BOLLARDS.
B	E.C. SHALL REUSE ALL EXISTING CONDUIT AND WIRING, BRANCH CIRCUITS, SWITCH LEG, AND CONTROL FOR ALL REPLACED LIGHTING, UNLESS NOTED OTHERWISE.
C	LIGHTING FIXTURES TO BE REPLACED ONE FOR ONE UNLESS NOTED OTHERWISE.
D	E.C. TO REUSE EXISTING POLE BASES, ASSOCIATED POLES, ANCHOR BOLTS AND EXTEND ALL WIRING AND CONDUIT AS NECESSARY FOR MOUNTING OF NEW FIXTURE UNLESS NOTED OTHERWISE.
E	ELECTRICAL CONTRACTOR SHALL REMOVE AND DISPOSE OF ALL EXISTING LIGHTING FIXTURES IN AREA OF WORK UNLESS NOTED OTHERWISE.
F	ELECTRICAL CONTRACTOR SHALL EXTEND ALL CONDUIT AND WIRING OF ALL RELOCATED ITEMS.
G	THE WORD "PROVIDE" MEANS TO FURNISH AND INSTALL.
H	REPAINT ALL EXISTING TO REMAIN SITE POLES TO MATCH NEW FIXTURE DARK BRONZE FINISH.
I	ALL NEW SITE POLE LIGHTING FIXTURES SHALL BE EQUIPPED WITH INTEGRAL PHOTOCELL, PHOTO ON / PHOTO OFF.

KEY NOTES :	
1.	TYPICAL ONE FOR ONE LIGHT FIXTURE REPLACEMENT FOR ALL RESIDENTIAL UNITS SHOWN THIS SHEET.
2.	PROVIDE NEW LIGHT FIXTURE AND PROVIDE ALL CONDUIT, WIRE, AND TIE TO NEAREST BRANCH CIRCUIT. PHOTO ON / PHOTO OFF THROUGH INTEGRAL PHOTOCELL.
3.	MOUNT NEW FLOOD LIGHT FIXTURE TO EXISTING MOUNTING BASE.
4.	LIGHT FIXTURE MOUNTED ABOVE ENTRANCE DOOR.
5.	E.C. TO REPLACE DAMAGED BASE COVER.
6.	PROVIDE NEW WALL PAK TYPE "OF" 144" AFF. ENERGIZE THROUGH NEAREST EXTERIOR BRANCH LIGHTING CIRCUIT. PROVIDE ALL CONDUIT, WIRING, PHOTO ON / PHOTO OFF THROUGH INTEGRAL PHOTOCELL.
7.	PROVIDE NEW SITE POLE, BASE, AND FIXTURE. SEE 3E800 FOR POLE BASE DETAIL.
8.	ELECTRICAL CONTRACTOR TO TRENCH FOR NEW UNDERGROUND CONDUIT TO NEW LIGHT POLE. ENERGIZE NEW SITE POLE FROM EXISTING GARAGE PANEL.
9.	E.C. TO COORDINATE WITH LOCAL UTILITY FOR THE REMOVAL OF OVERHEAD POWER LINE FEEDING SITE POLE TO BE REMOVED.
10.	ELECTRICAL CONTRACTOR SHALL BE RESPONSIBLE FOR TRENCHING AND BORE THROUGH BELOW CEMENT SLAB/SIDEWALK. E.C. TO PATCH/REPAIR ONCE COMPLETED.
11.	PROVIDE NEW WALL PAK TYPE "OF" 144" AFF. PHOTO ON / OFF THROUGH INTEGRAL PHOTOCELL. PROVIDE 20A-1P PHASE BRANCH BREAKER FROM EXISTING METER.
12.	REPEL BRANCH CIRCUIT WIRING IF REQUIRED. PROVIDE CONDUIT IF REQUIRED. REPAIR EXISTING CONDUIT AND WIRING.
13.	PROVIDE NEW SITE POLE, BASE AND FIXTURE. REFER TO 2E800 FOR POLE BASE DETAIL.
14.	NEW FIXTURE TO BE PIER MOUNTED ON TOP OF BLOCK WALL. PROVIDE ALL NECESSARY MOUNTING.
15.	REMOVE EXISTING POLE AND FIXTURE. CAP AND FILL FLUSH TO CONCRETE PATIO.
16.	POLE AND BASE TO REMAIN FIXTURE ONLY TO BE REPLACED. STRIP AND REPAINT POLE AND BASE TO MATCH DARK BRONZE FIXTURE FINISH.
17.	BASE TO REMAIN FIXTURE AND POLE ONLY TO BE REPLACED.
18.	BASE TO REMAIN BOLLARD FIXTURE ONLY TO BE REPLACED.
19.	BASE TO BE MODIFIED SEE 5E800 FOR DETAIL. EXTEND CONDUIT AND WIRING. NEW POLE AND FIXTURE.
20.	STUB CONDUIT UP CORNER OF THE BUILDING AND INTO SOFFET FOR RUN TO EXISTING BACK BOX BY SIDE DOOR ENTRANCE. SEE DETAIL 3E401 THIS SHEET.
21.	PROVIDE NEW BACK BOX TO SUPPORT NEW FIXTURE AND CONDUIT FOR NEW SITE POLE.
22.	REINSTALL POWER RECEPTACLE AND CAMERA. PRESERVE CAMERA VIEW.
23.	REINSTALL TWO CAMERAS. PRESERVE CAMERA VIEWS.
24.	RELOCATE NEW BASE AND FIXTURE AS NEEDED TO PRESERVE BRANCH CIRCUIT WIRING.



REFERENCE TAGS	
	KEY NOTE

LIGHTING SYMBOLS	
REFER TO LIGHTING FIXTURES SCHEDULE FOR ALL LUMINAIRE TYPES WHETHER WALL MOUNTED OR CEILING MOUNTED.	
	LIGHTING FIXTURE A - CIRCUIT SWITCH LEG. NO DESIGNATION INDICATES PORTION OF CIRCUIT SWITCHED FROM LOCAL SWITCH OR OCCUPANCY SENSOR. B - FIXTURE DESIGNATION (SEE SCHEDULE) R - SWITCHING DEVICE. NO DESIGNATION INDICATES PORTION OF CIRCUIT SWITCHED FROM LOCAL SWITCH OR OCCUPANCY SENSOR. S - CIRCUIT SWITCHED VIA RELAY IN RELAY CABINET MOUNTED NEXT TO LIGHTING PANEL. T - CIRCUIT NUMBER.
	LIGHTING FIXTURE - EXTERIOR SCENCE.
	LIGHTING FIXTURE DOWNLIGHT - SURFACE SQUARE TYPE.
	LIGHTING FIXTURE DOWNLIGHT - RECESSED ROUND TYPE.
	POLE MOUNTED AREA LIGHTING FIXTURE(S) - SINGLE LUMINAIRE.
	POLE MOUNTED AREA LIGHTING FIXTURE(S) - TWIN LUMINAIRE AT 90 DEGREE.
	BUILDING MOUNTED FLOOD LIGHTING FIXTURE(S).
	LIGHTING FIXTURE - EXTERIOR BOLLARD.
	CONDUIT AND WIRING

1 HUBER HOMES SITE
1" = 30'-0"



Consultant:

LA CROSSE HOUSING AUTHORITY
LHA 2020 CAPITAL IMPROVEMENTS PROJECTS

Project Location: LA CROSSE, WI 54601

LIGHTING SCHEDULES AND DETAILS

HSR Project Number:
20040

Project Date:
AUGUST 2020

Drawn By:
C. CRANDALL

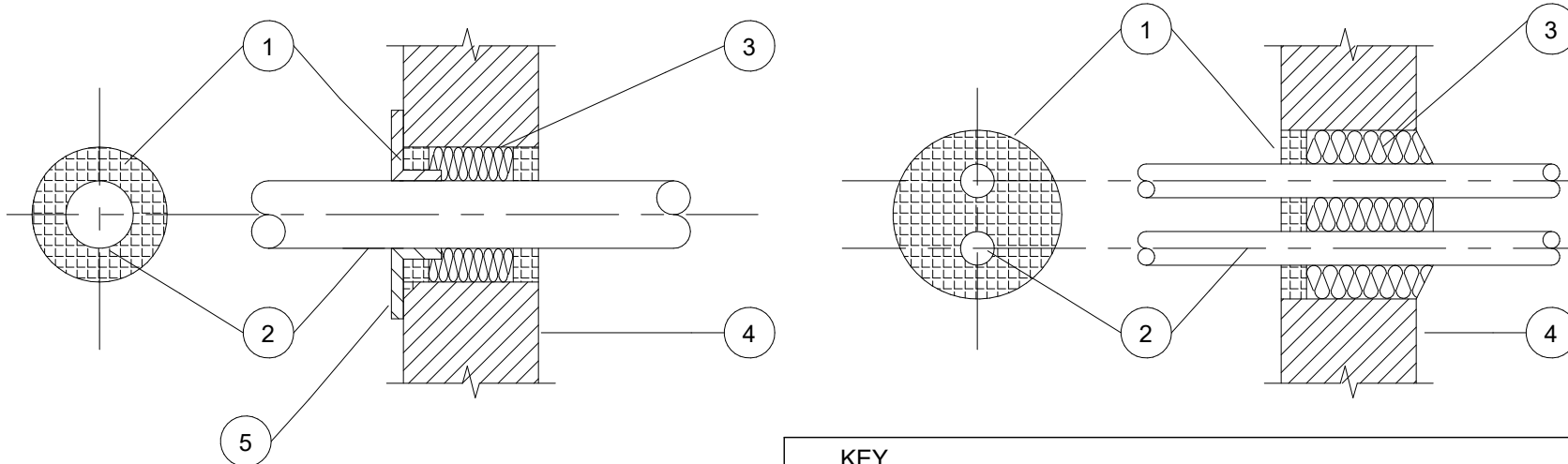
Key Plan:

No.	Description	Date
AD-2	ADDENDUM 2	8-21-20

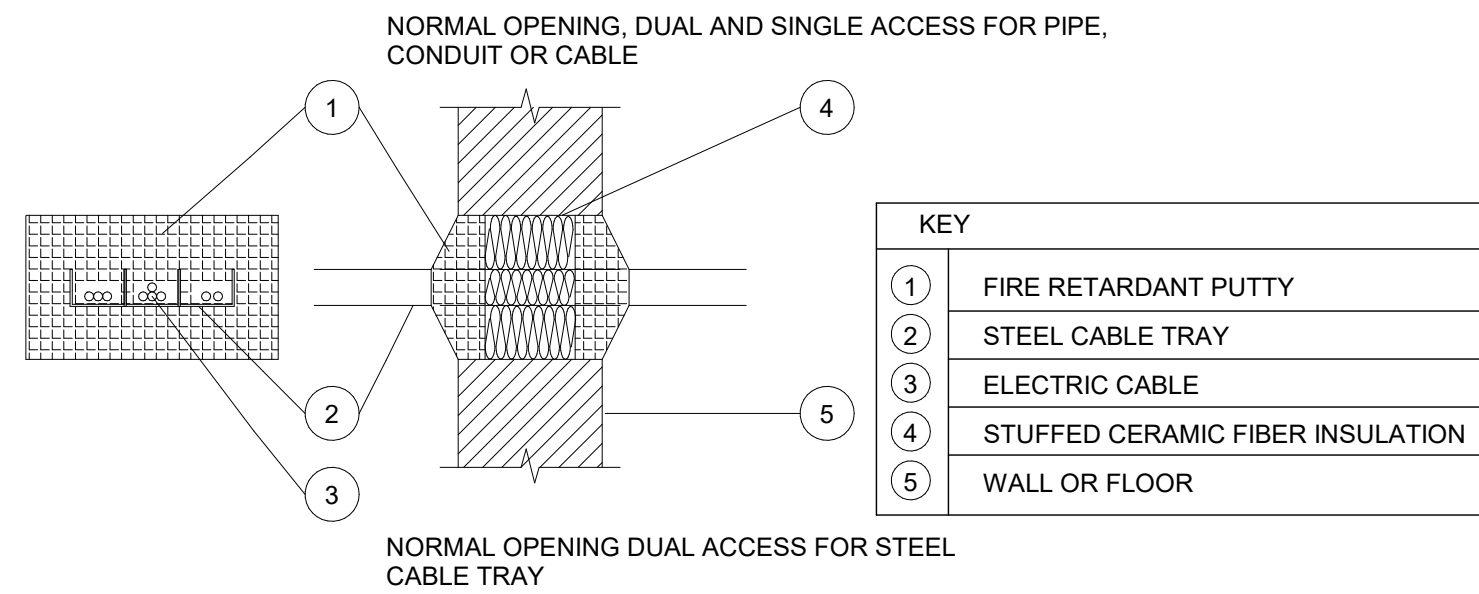
Graphic Scale:

Last Update:
8/21/2020 7:48:18 AM

E800



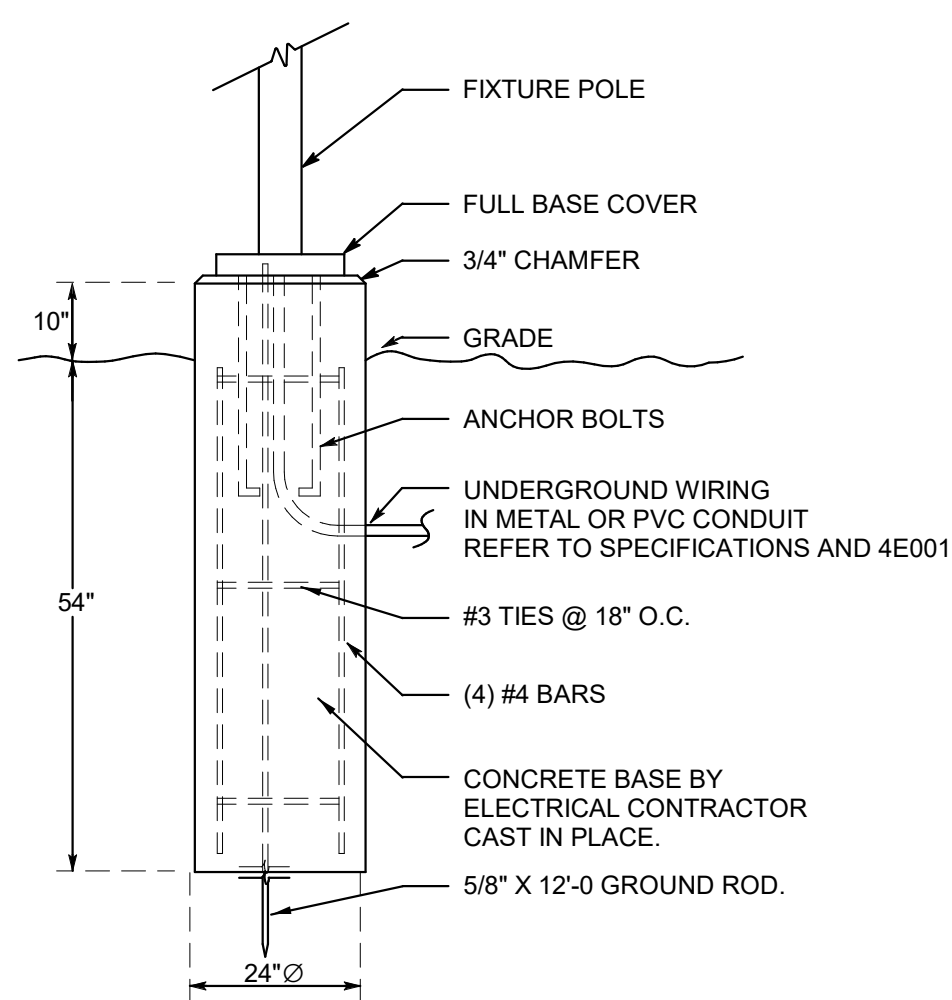
KEY	
1	FIRE RETARDANT PUTTY
2	PENETRATING ITEM - PIPE CONDUIT CABLE
3	STUFFED CERAMIC FIBER INSULATION
4	WALL OR FLOOR
5	SHEET METAL ESCUTCHEON ON MECH ROOM SIDE OF PENETRATION



KEY	
1	FIRE RETARDANT PUTTY
2	STEEL CABLE TRAY
3	ELECTRIC CABLE
4	STUFFED CERAMIC FIBER INSULATION
5	WALL OR FLOOR

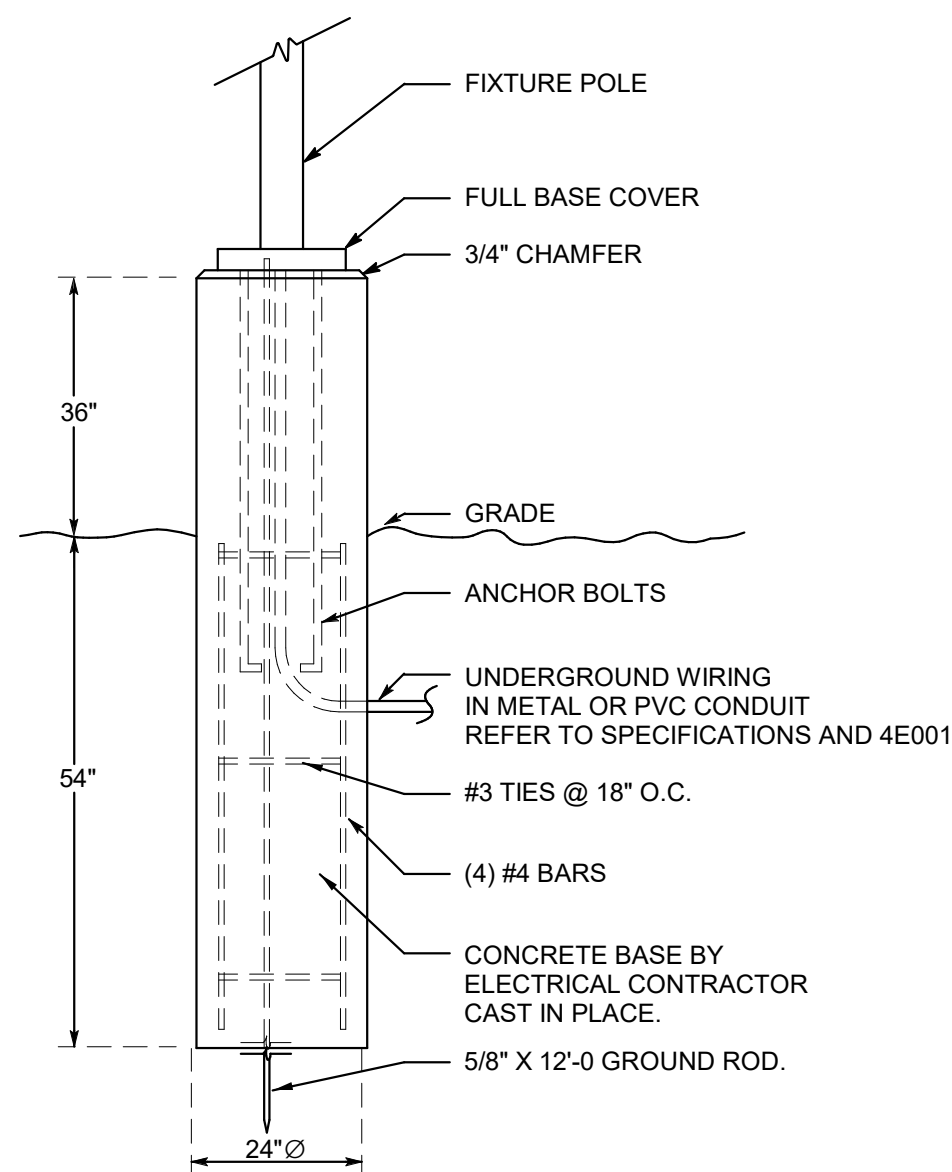
1 FIRE STOP DETAIL

NTS



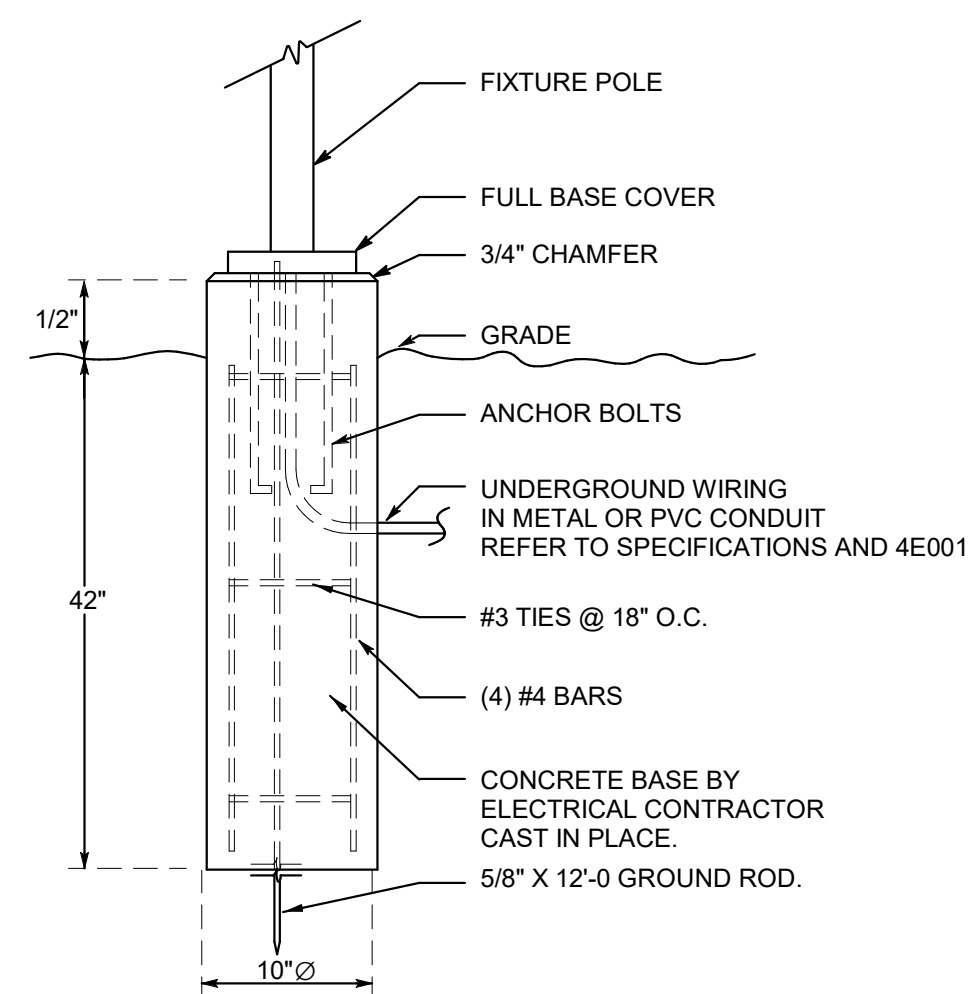
2 POLE DETAIL - 10" BASE

NTS



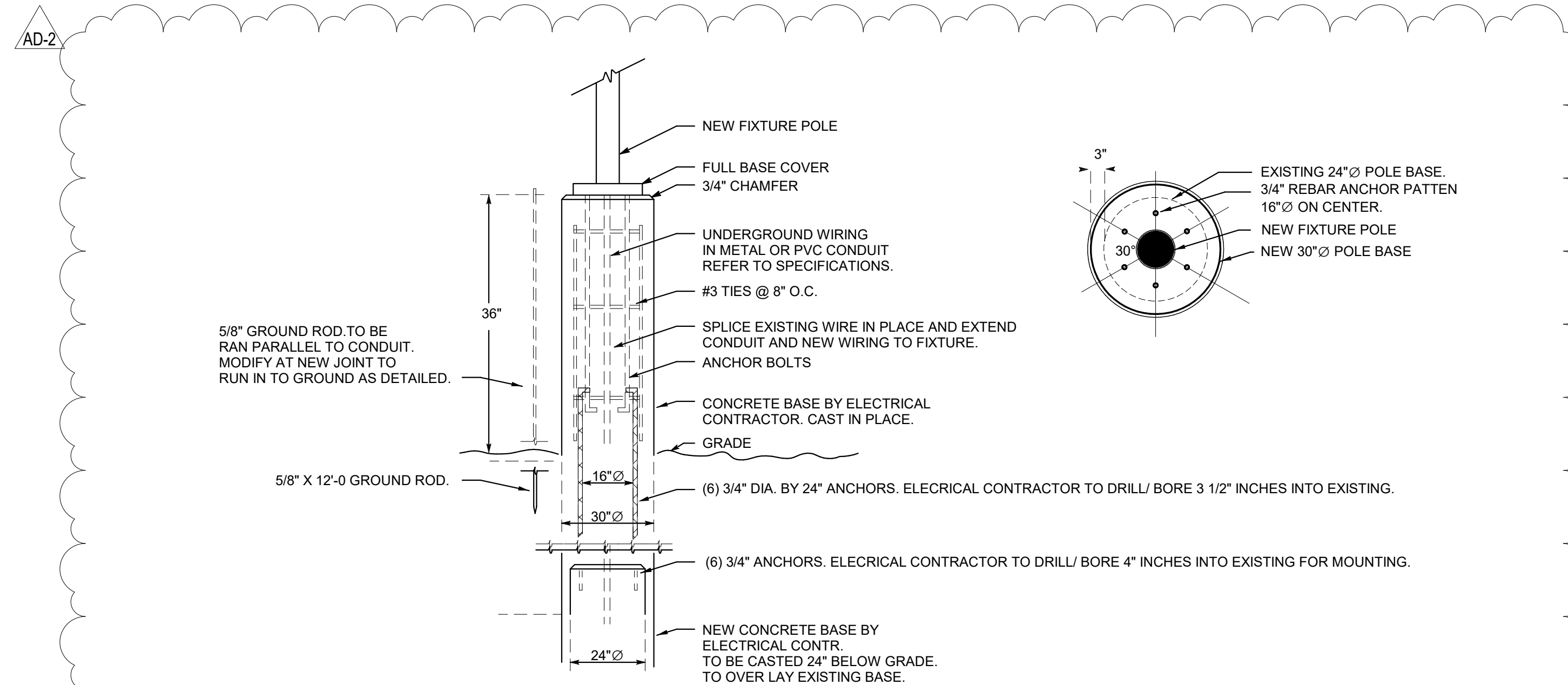
3 POLE DETAIL - 36" BASE

NTS



4 BOLLARD DETAIL - TYPE OL BASE

1/8" = 1'-0"



5 POLE DETAIL - MODIFIED 36" BASE

NTS

LIGHTING FIXTURE SCHEDULE

MARK NO.	MANUFACTURE	CATALOG	DESCRIPTION	VOLTAGE	MOUNTING				LAMP	REMARKS
					F	S	P	O		
OAS	LITHONIA	MR1 LED 42C 700 50K SR3 MVOLT SPA DFL DDBXD DLL127F1.5JU ASTSQ20-290DDBXD	LED TWIN HEAD, TYPE 3, 2@90 FIXTURES ONLY W/ PHOTOCCELL	MVOLT				X	LED	1
OA20R	LITHONIA	MR1 LED 42C 700 50K SR3 MVOLT RPA DFL DDBXD DLL127F1.5JU AST20-290DDBXD/RSS20 4-5B T20 VD DDBXD	LED TWIN HEAD, TYPE 3, 2@90 20'-0" POLE AND FIXTURES W/ PHOTOCCELL	MVOLT				X	LED	2
OBS	LITHONIA	MR1 LED 42C 700 50K SR3 MVOLT SPA DFL DDBXD DLL127F1.5JU ASTSQ20-190DDBXD	LED SINGLE HEAD, TYPE 3, 1@90 FIXTURE ONLY W/ PHOTOCCELL	MVOLT				X	LED	3
OBR	LITHONIA	MR1 LED 42C 700 50K SR3 MVOLT RPA DFL DDBXD DLL127F1.5JU ASTXX-190DD8	LED SINGLE HEAD, TYPE 3, 1@90 FIXTURE ONLY W/ PHOTOCCELL	MVOLT				X	LED	4
OB20R	LITHONIA	MR1 LED 42C 700 50K SR3 MVOLT RPA DFL DDBXD DLL127F1.5JU AST20-190DDBXD/RSS20 4-5B T20 VD DDBXD	LED SINGLE HEAD, TYPE 3, 1@90 20'-0" POLE AND FIXTURE W/ PHOTOCCELL	MVOLT				X	LED	5
OB20RB	LITHONIA	MR1 LED 42C 700 50K SR3 MVOLT RPA DFL DDBXD DLL127F1.5JU AST20-190DDBXD/RSS20 4-5B T20 VD DDBXD	LED SINGLE HEAD, TYPE 3, 1@90 20'-0" POLE, FIXTURE, CUT OFF, W/ PHOTOCCELL	MVOLT				X	LED	6
OB15R	LITHONIA	MR1 LED 42C 700 50K SR3 MVOLT RPA DFL DDBXD DLL127F1.5JU AST20-190DDBXD/RSS15 4-5B T20 VD DDBXD	LED SINGLE HEAD, TYPE 3, 1@90 15'-0" POLE, FIXTURE, W/ PHOTOCCELL	MVOLT				X	LED	7
OB15S	LITHONIA	MR1 LED 42C 700 50K SR3 MVOLT SPA DFL DDBXD DLL127F1.5JU AST20-190DDBXD/SS15 4-5B T20 VD DDBXD	LED SINGLE HEAD, TYPE 3, 1@90 15'-0" POLE, FIXTURE, W/ PHOTOCCELL	MVOLT				X	LED	8
OC15R	LITHONIA	MR1 LED 42C 700 50K SR5 MVOLT SPA DFL DDBXD DLL127F1.5JU AST20-190DDBXD/RSS15 4-5B T20 VD DDBXD	LED SINGLE HEAD, TYPE 5, 1@90 15'-0" POLE, FIXTURE, W/ PHOTOCCELL	MVOLT				X	LED	9
ODR	LITHONIA	MRP LED 42C 530 50K SR5 MVOLT MRP20 DFL DDBXD DLL127F1.5JU	LED POST TOP, TYPE 5, FIXTURE ONLY W/ PHOTOCCELL	MVOLT				X	LED	10
OE	HUBBELL OUTDOOR	FML-20L-52-5K-7-W-U-K-DBS-PC-F	LED FLOOD LIGHT, FLAG AND AREA W/ PHOTOCCELL	MVOLT				X	LED	11
OF	HUBBELL OUTDOOR	SG2-50-5K7-FT-UNV-DBS-PCU	HIGH LUMEN LED WALL PAK W/ PHOTOCCELL	MVOLT	X				LED	12
OG	HUBBELL OUTDOOR	SG1-20-5K7-FT-UNV-DBS-PCU	LOW LUMEN LED WALL PAK W/ PHOTOCCELL	MVOLT	X				LED	13
OH	LITON	LCMPD12Q-BZ-T40	SURFACE LED DOWNLIGHT SQUARE	MVOLT	X				LED	14
OJ	NA									
OK	SYLVANIA	LED/RT8/3000/950/72628 (72628)/RT8TRIMALZAK (75092)	RETROFIT RECESSED 8" ROUND DOWNLIGHT	MVOLT	X				LED	15
OL	HUBBELL OUTDOOR	FN2-24L-U-5K-DBS-DM	LED BOLLARD	MVOLT				X	LED	16
OM	PHOTON-1	MEN-HD530	EXTERIOR LED WALL SCONCE	120		X			LED	17

* SEE REMARKS
*(F) FLUSH MOUNT, (S) SURFACE, (P) PENDANT HUNG, (O) OTHER

FIXTURES EQUAL IN ALL RESPECTS TO THE SPECIFIED FIXTURES MANUFACTURED BY PHILLIPS, NUVOUGHTING, COOPER LIGHTING, LITHONIA, HUBBELL, AND DAYBRITE SHALL BE CONSIDERED EQUAL, UNLESS NOTED OTHERWISE.

LIGHTING FIXTURE SCHEDULE REMARKS

- 2@90 FIXTURE ONLY REPLACEMENT ON EXISTING SQUARE STRAIGHT STEEL POLE. FIXTURE EQUIPPED WITH SQUARE DRILL-MOUNT TENON SLIPFITTER. TYPE 3 DISTRIBUTION.
- 2@90 FIXTURE AND 20'-0" ROUND STRAIGHT STEEL POLE. TYPE 3 DISTRIBUTION.
- 1@90 FIXTURE ONLY REPLACEMENT ON EXISTING SQUARE STRAIGHT STEEL POLE. FIXTURE EQUIPPED WITH SQUARE DRILL-MOUNT TENON SLIPFITTER. TYPE 3 DISTRIBUTION.
- 1@90 FIXTURE ONLY REPLACEMENT ON EXISTING ROUND STRAIGHT STEEL POLE. FIXTURE EQUIPPED WITH ROUND DRILL-MOUNT TENON SLIPFITTER. VERIFY DRILLING AND SLIPFITTER SIZE TO MATCH EXISTING POLE. TYPE 3 DISTRIBUTION.
- 1@90 FIXTURE AND 20'-0" ROUND STRAIGHT STEEL POLE. TYPE 3 DISTRIBUTION.
- 1@90 FIXTURE AND 20'-0" ROUND STRAIGHT STEEL POLE. FIXTURE SHALL BE EQUIPPED WITH REAR CUT-OFF KIT/SHIELD. TYPE 3 DISTRIBUTION.
- 1@90 FIXTURE AND 15'-0" ROUND STRAIGHT STEEL POLE. TYPE 3 DISTRIBUTION.
- 1@90 FIXTURE AND 15'-0" SQUARE STRAIGHT STEEL POLE. TYPE 3 DISTRIBUTION.
- 1@90 FIXTURE AND 15'-0" ROUND STRAIGHT STEEL POLE. TYPE 5 DISTRIBUTION.
- POST-TOP FIXTURE ONLY REPLACEMENT ON EXISTING ROUND STRAIGHT STEEL POLE. EQUIPPED WITH 2-3/8" TENON SLIPFITTER.
- LED FLOOD LIGHT, 5000 LUMENS, KNUCKLE MOUNTED.
- LED FORWARD THROW WALL PAK, 5500 LUMENS.
- LED FORWARD THROW WALL PAK, 2283 LUMENS.
- 12" LED SURFACE DOWNLIGHT, WET LOCATION.
- 8" QUICK CHANGE LED RETROFIT, 2900 LUMENS, 5000K, WIDE BEAM ANGLE 77 DEGREES, SEMI-SPECULAR REFLECTOR, CHROME TRIM RING.
- FRESNO ROUND LED BOLLARD, TYPE 5 DISTRIBUTION.
- 10" SEMI GLOSS WHITE OUTDOOR WALL MOUNT FIXTURE, SCREW-IN A19 LED LAMPS, NO EQUALS.